

2500 Gal. Three Compartment Single Auto Siphon Septic Tank

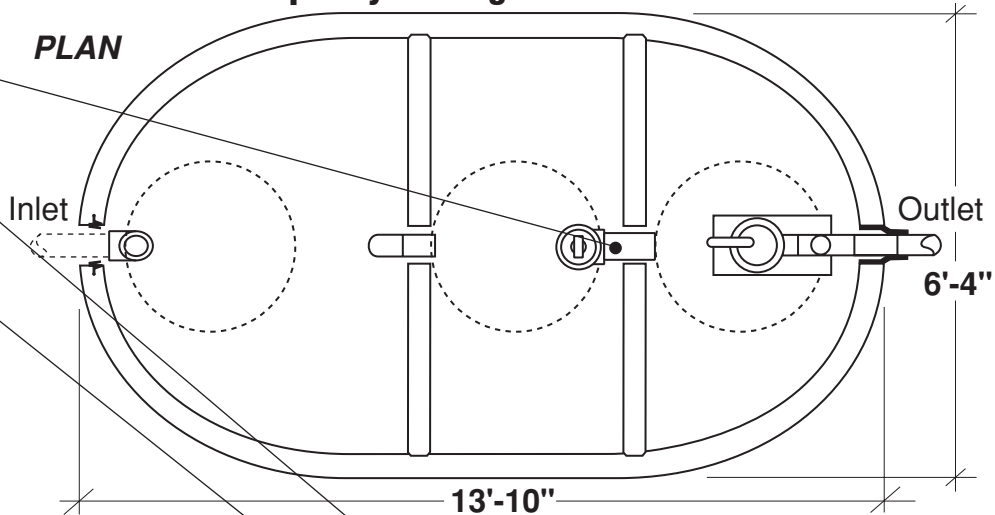
FLXX®

FLXX®

Total Capacity: 2450 gallons

Sealed baffle wall. Install effluent filter at this location.

PLAN

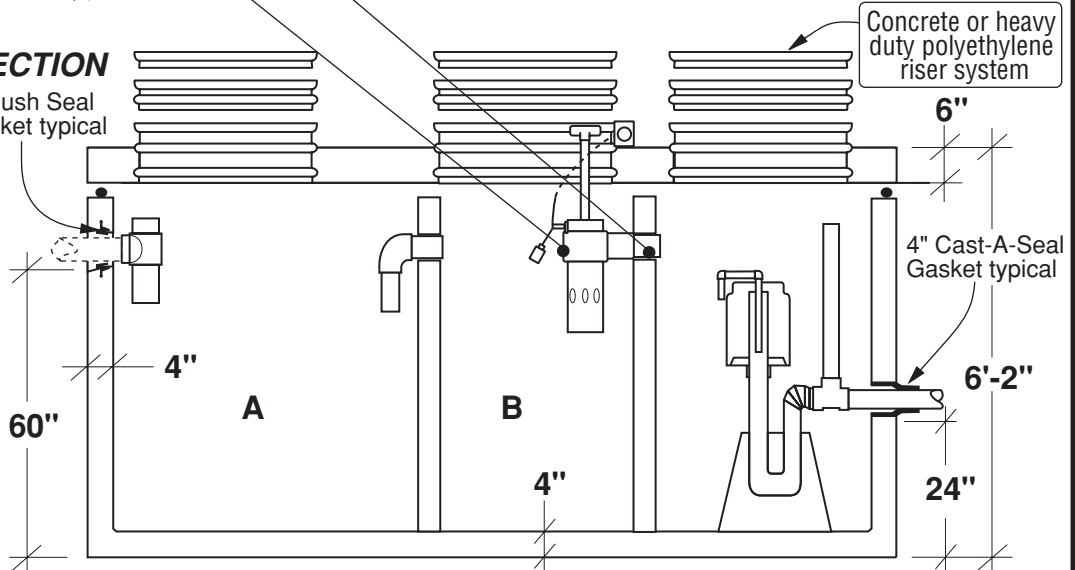


Filter monitor: Optional liquid level alarm box, float control switch with bracket and J-box. Connections to electrical source by others.

- Monolithic tank meets ASTM-C-1227 Spec. for water and wastewater structures.
- Butyl rubber sealant meets Fed. Spec. SS-S-210A. (Provided with tank)
- All plumbing shown in diagram is 4" SDR 35. (Provided with tank)

SECTION

4" Push Seal Gasket typical



Part #	Capacities (gallons)		Siphon Chamber (gallons)	Siphon / Discharge		Approximate Weights			
	A	B		Tank*	Lid	Baffle Walls	Total		
PCA-000-353	1,145	780	525	#413	135 Gal.	11,890 lbs	5,160 lbs	2,300 lbs	19,350 lbs
PCA-001-353				#417	180 Gal.				
PCA-002-353				#423	240 Gal.				

Note: N.T.S.

* Includes 200 lbs. siphon / foundation

FLXX® 
Watertight

Front Range Precast Concrete, Inc.

5439 N. Foothills Highway, Boulder, Colorado 80302

Phone (303) 442-3207 • (800) 783-3207 • Fax (303) 442-3209

www.flxx.com