

# 2000 Gal. Three Compartment Single Auto Siphon Septic Tank

FLXX®

FLXX®

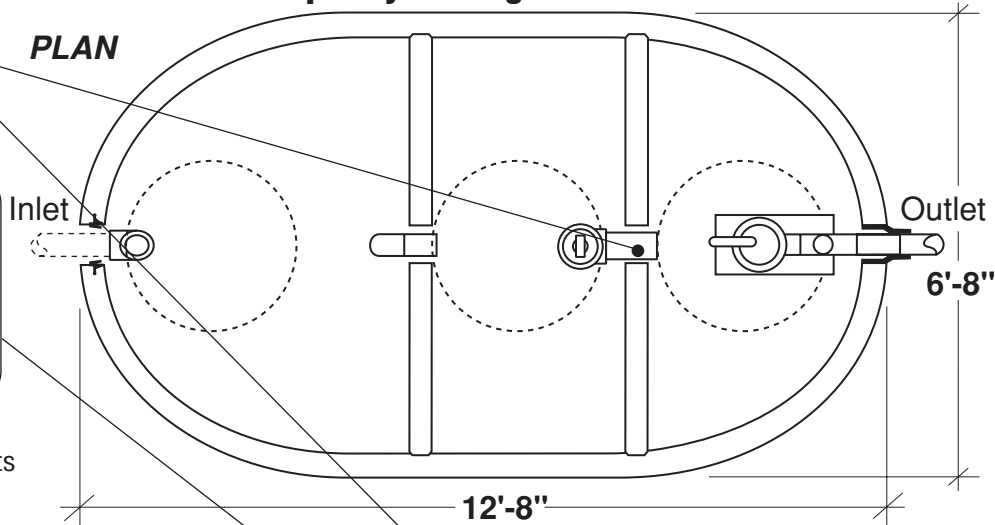
Total Capacity: 2000 gallons

Sealed baffle wall. Install effluent filter at this location.

Filter monitor: Optional liquid level alarm box, float control switch with bracket and J-box. Connections to electrical source by others.

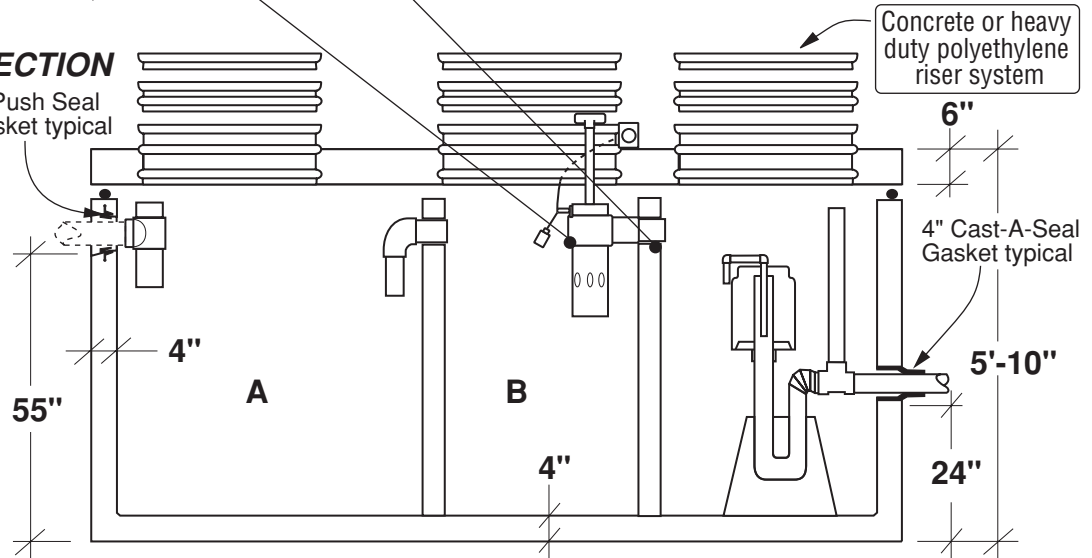
- Monolithic tank meets ASTM-C-1227 Spec. for water and wastewater structures.
- Butyl rubber sealant meets Fed. Spec. SS-S-210A. (Provided with tank)
- All plumbing shown in diagram is 4" SDR 35. (Provided with tank)

PLAN



SECTION

4" Push Seal Gasket typical



Part #	Capacities (gallons)		Siphon Chamber (gallons)	Siphon / Discharge		Approximate Weights			
	A	B		Tank*	Lid	Baffle Walls	Total		
PCA-000-265	1,000	500	500	#413	130 Gal.	11,890 lbs	5,145 lbs	2,220 lbs	19,255 lbs
PCA-001-265				#417	170 Gal.				
PCA-002-265				#423	230 Gal.				

Note: N.T.S.

\* Includes 200 lbs. siphon / foundation

**FLXX®**   
**Watertight**  
**Front Range Precast Concrete, Inc.**  
 5439 N. Foothills Highway, Boulder, Colorado 80302  
 Phone (303) 442-3207 • (800) 783-3207 • Fax (303) 442-3209  
[www.flxx.com](http://www.flxx.com)