

# 1500 Gal. Three Compartment Single Auto Siphon Septic Tank

FLXX®

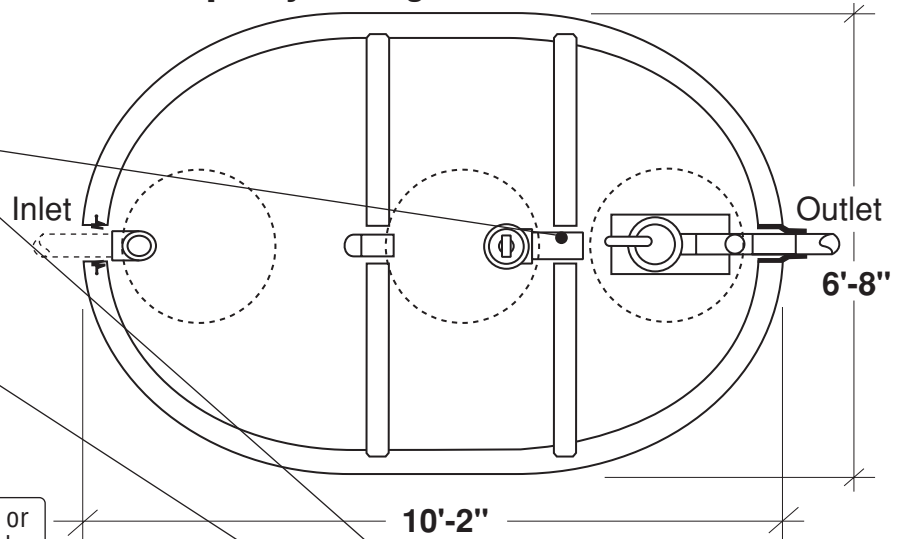
FLXX®

Total Capacity: 1535 gallons

## PLAN

Sealed baffle wall.  
Install effluent filter  
at this location.

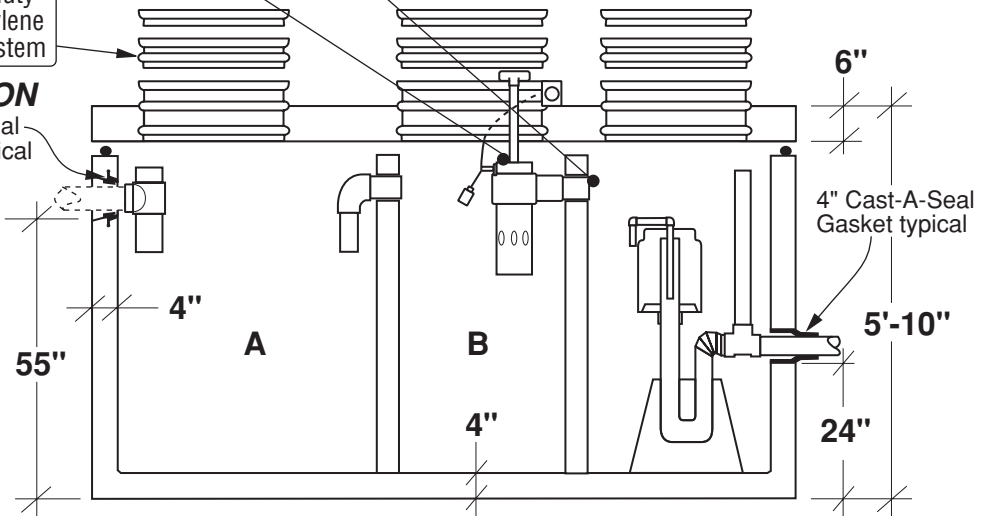
Filter monitor: Optional  
liquid level alarm box,  
float control switch with  
bracket and J-box.  
Connections to electrical  
source by others.



Concrete or  
heavy duty  
polyethylene  
riser system

## SECTION

4" Push Seal  
Gasket typical



- Monolithic tank meets ASTM-C-1227 Spec. for water and wastewater structures.
- Butyl rubber sealant meets Fed. Spec. SS-S-210A. (Provided with tank)
- All plumbing shown in diagram is 4" SDR 35. (Provided with tank)

Part #	Capacities (gallons)		Siphon Chamber (gallons)	Siphon / Discharge		Approximate Weights			
	A	B		Tank*	Lid	Baffle Walls	Total		
PCA-000-263	675	450	410	#413	115 Gal.	9,815 lbs	3,900 lbs	2,220 lbs	15,935 lbs
PCA-001-263				#417	150 Gal.				
PCA-002-263				#423	200 Gal.				

Note: N.T.S.

\* Includes 200 lbs. siphon / foundation



**Front Range Precast Concrete, Inc.**

5439 N. Foothills Highway, Boulder, Colorado 80302  
Phone (303) 442-3207 • (800) 783-3207 • Fax (303) 442-3209  
[www.flxx.com](http://www.flxx.com)