

# 1250 Gal. Three Compartment Single Auto Siphon Septic Tank

FLXX®

FLXX®

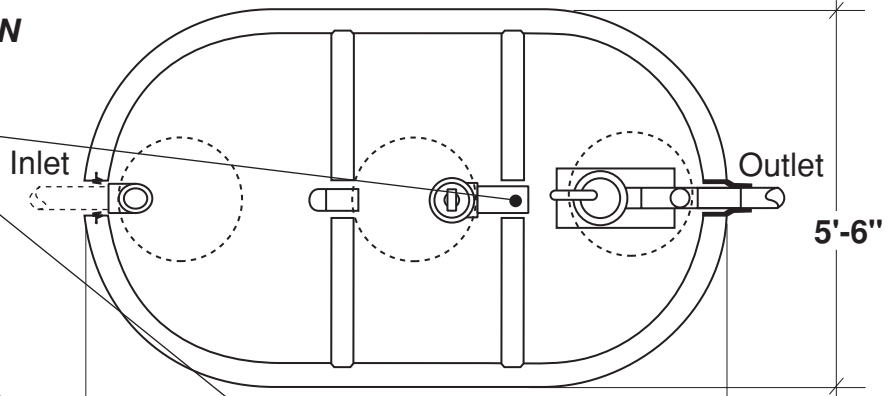
Total Capacity: 1390 gallons

PLAN

Sealed baffle wall.  
Install effluent filter  
at this location.

Filter monitor: Optional  
liquid level alarm box,  
float control switch  
with bracket and J-box.  
Connections to electrical  
source by others.

Concrete or heavy  
duty polyethylene  
riser system

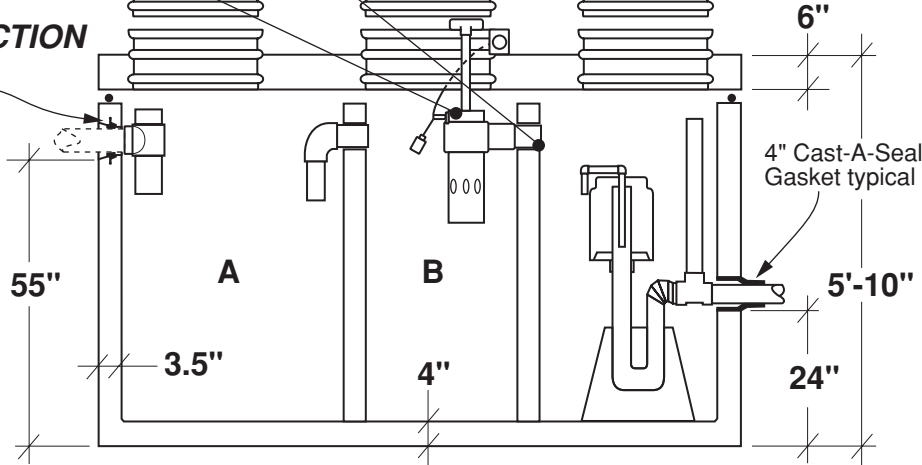


SECTION

4" Push Seal  
Gasket typical

4" Cast-A-Seal  
Gasket typical

- Monolithic tank meets ASTM-C-1227 Spec. for water and wastewater structures.
- Butyl rubber sealant meets Fed. Spec. SS-S-210A. (Provided with tank)
- All plumbing shown in diagram is 4" SDR 35. (Provided with tank)



\* Includes 200 lbs. siphon / foundation

Part #	Capacities (gallons)		Siphon Chamber (gallons)	Siphon / Discharge		Approximate Weights			
	A	B		Tank*	Lid	Baffle Walls	Total		
PCA-000-262	640	420	330	#413	85 Gal.	8,630 lbs	3,370 lbs	1,820 lbs	13,820 lbs
PCA-001-262				#417	110 Gal.				
PCA-002-262				#423	150 Gal.				

Note: N.T.S.

**FLXX®**   
**Watertight**  
**Front Range Precast Concrete, Inc.**  
 5439 N. Foothills Highway, Boulder, Colorado 80302  
 Phone (303) 442-3207 • (800) 783-3207 • Fax (303) 442-3209  
[www.flxx.com](http://www.flxx.com)