

# 1500 Gal. Three Compartment Electric Lift Septic Tank

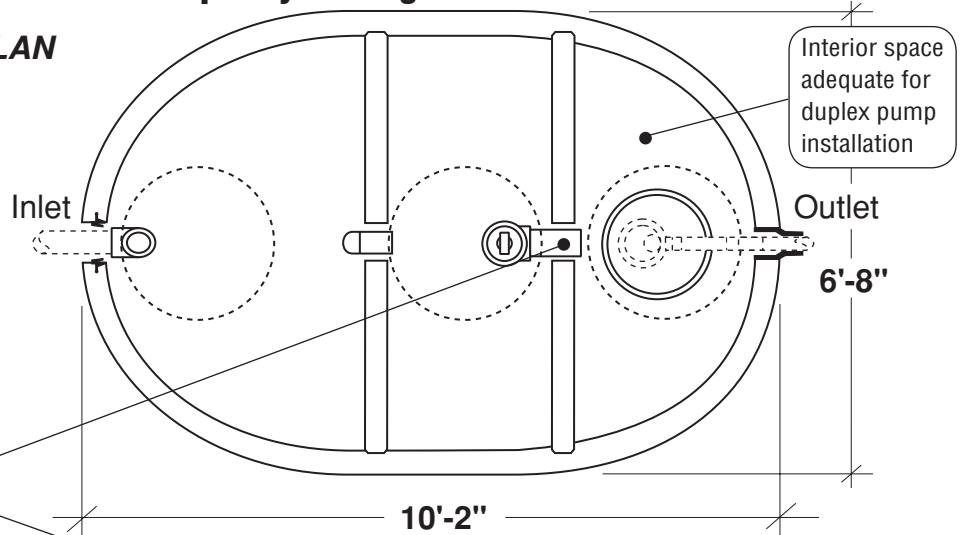
FLXX®

FLXX®

Total Capacity: 1535 gallons

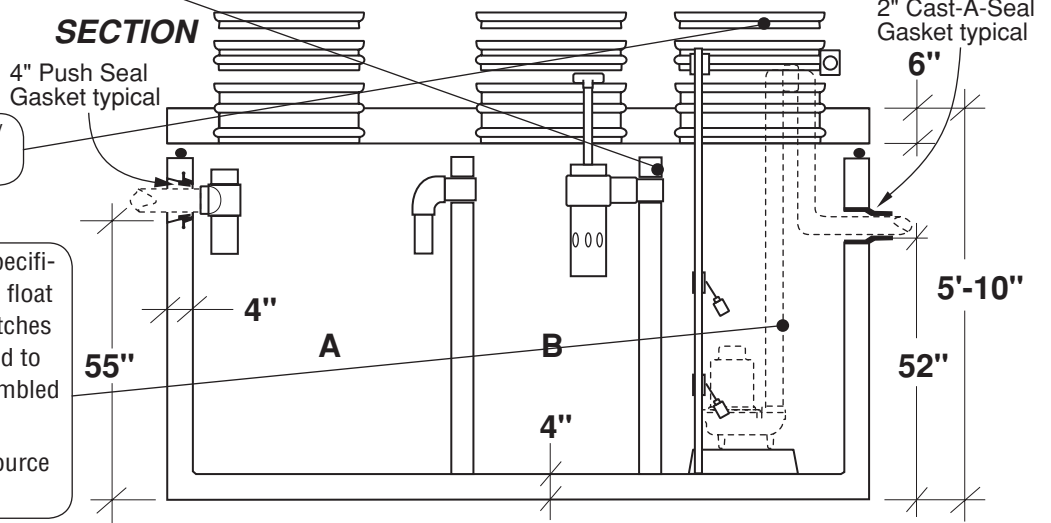
- Monolithic tank meets ASTM-C-1227 Spec. for water and wastewater structures.
- Butyl rubber sealant meets Fed. Spec. SS-S-210A. (Provided with tank)
- See pages 35 - 41 for pumps and controls.

PLAN



Sealed baffle wall. Install effluent filter at this location.

SECTION



2' x 1' Modified riser w/ J-box float tree bracket

Effluent pump (sized per specification) / remote alarm box, float tree, control and alarm switches installed and pump plumbed to stub-out including preassembled pipes and fittings. Connections to electrical source by others.

Part #	Capacities (gallons)		Lift Station Chamber (gallons)	Discharge Per Cycle	Approximate Weights			
	A	B			Tank	Lid	Baffle Walls	Total
PCA-000-268	675	450	410	Variable 8.8 Gal. / Vertical Inch	9,615 lbs	3,900 lbs	2,220 lbs	15,735 lbs

Note: N.T.S.

**FLXX®**   
**Watertight**  
**Front Range Precast Concrete, Inc.**  
 5439 N. Foothills Highway, Boulder, Colorado 80302  
 Phone (303) 442-3207 • (800) 783-3207 • Fax (303) 442-3209  
[www.flxx.com](http://www.flxx.com)