

2000 Gal. Three Compartment Dual Auto Siphon Septic Tank

FLXX®

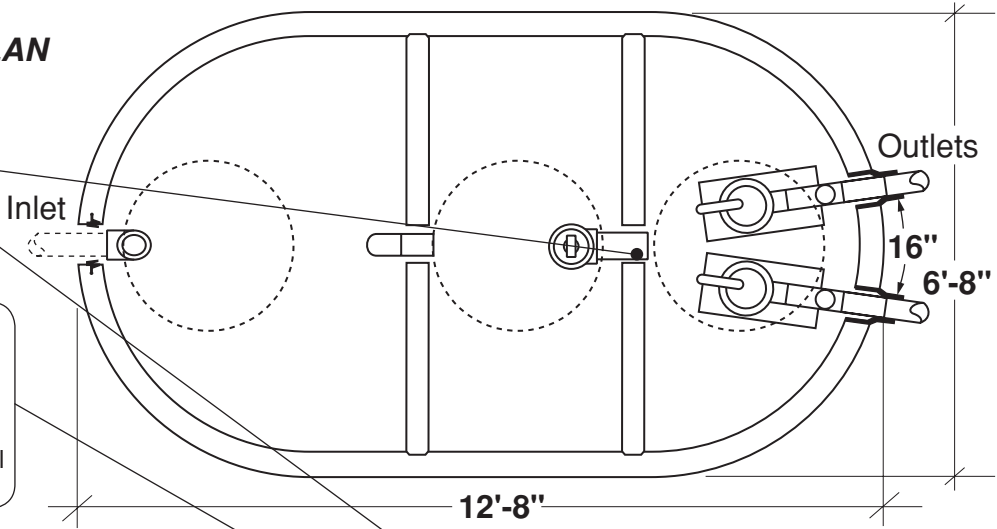
FLXX®

Total Capacity: 2000 gallons

PLAN

Sealed baffle wall.
Install effluent filter
at this location.

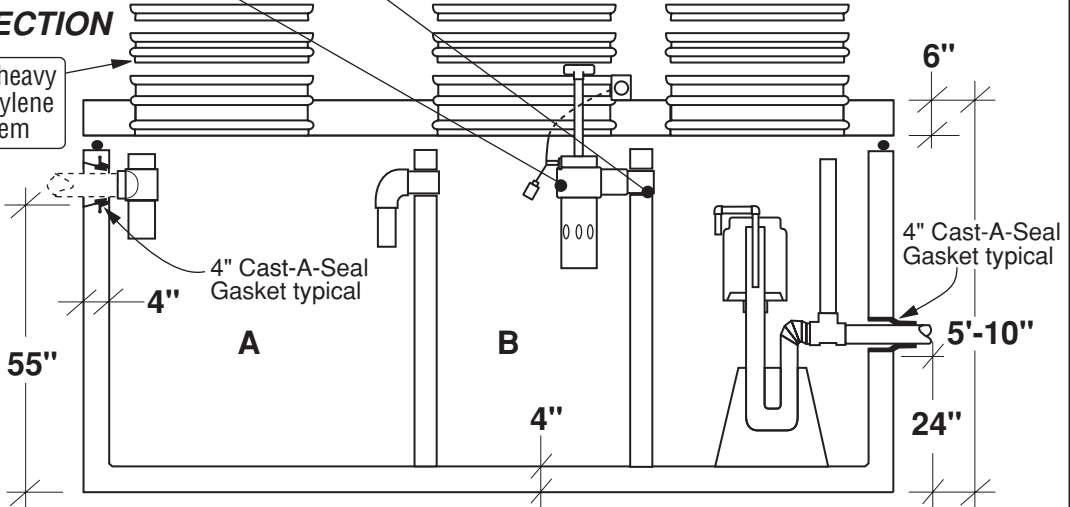
Filter monitor: Optional
liquid level alarm box,
float control switch with
bracket and J-box.
Connections to electrical
source by others.



SECTION

Concrete or heavy
duty polyethylene
riser system

- Monolithic tank meets ASTM-C-1227 Spec. for water and wastewater structures.
- Butyl rubber sealant meets Fed. Spec. SS-S-210A. (Provided with tank)
- All plumbing shown in diagram is 4" SDR 35. (Provided with tank)



* Includes (2) 200 lbs. siphon / foundations

Part #	Capacities (gallons)		Siphon Chamber (gallons)	Siphon / Discharge		Approximate Weights			
	A	B		Tank*	Lid	Baffle Walls	Total		
PCA-000-340	1,000	500	500	#413	130 Gal.	12,090 lbs	5,145 lbs	2,220 lbs	19,455 lbs
PCA-001-340				#417	170 Gal.				

Note: N.T.S.

FLXX® 
Watertight
Front Range Precast Concrete, Inc.
 5901 Dexter Street, Unit 200, Commerce City, CO 80022
 Phone (303) 442-3207 • (800) 783-3207 • Fax (303) 442-3209
www.flxx.com