

1500 Gal. Three Compartment Dual Auto Siphon Septic Tank

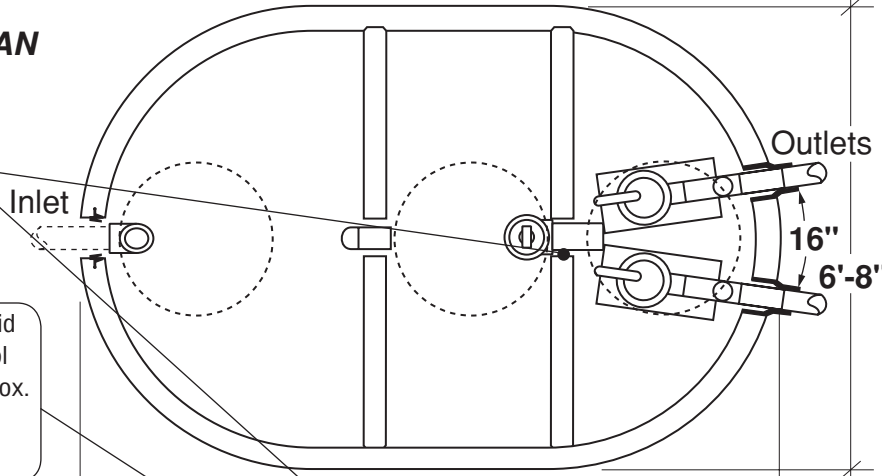
FLXX®

FLXX®

Total Capacity: 1535 gallons

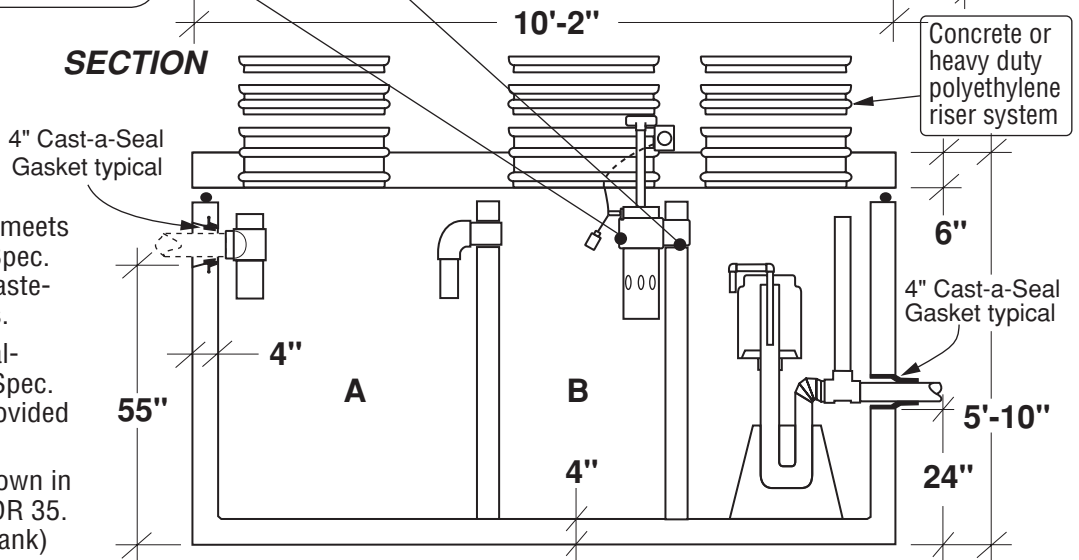
PLAN

Sealed baffle wall.
Install effluent filter at this location.



Filter monitor: Optional liquid level alarm box, float control switch with bracket and J-box.
Connections to electrical source by others.

SECTION



- Monolithic tank meets ASTM-C-1227 Spec. for water and wastewater structures.
- Butyl rubber sealant meets Fed. Spec. SS-S-210A. (Provided with tank)
- All plumbing shown in diagram is 4" SDR 35. (Provided with tank)

* Includes (2) 200 lbs. siphon / foundations

Part #	Capacities (gallons)		Siphon Chamber (gallons)	Siphon / Discharge		Approximate Weights			
	A	B		Tank*	Lid	Baffle Walls	Total		
PCA-000-264	675	450	410	#413	115 Gal.	10,015 lbs	3,900 lbs	2,220 lbs	16,135 lbs
PCA-001-264				#417	150 Gal.				

Note: N.T.S.

FLXX® 
Watertight
Front Range Precast Concrete, Inc.
 5901 Dexter Street, Unit 200, Commerce City, CO 80022
 Phone (303) 442-3207 • (800) 783-3207 • Fax (303) 442-3209
www.flxx.com