

# 1250 Gal. Three Compartment Dual Auto Siphon Septic Tank

FLXX®

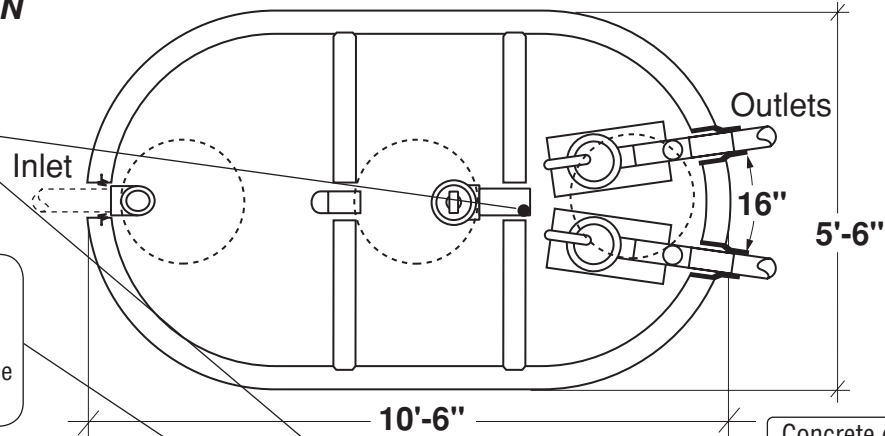
FLXX®

Total Capacity: 1390 gallons

PLAN

Sealed baffle wall.  
Install effluent filter at  
this location.

Filter monitor: Optional liquid  
level alarm box, float control  
switch with bracket and J-box.  
Connections to electrical source  
by others.

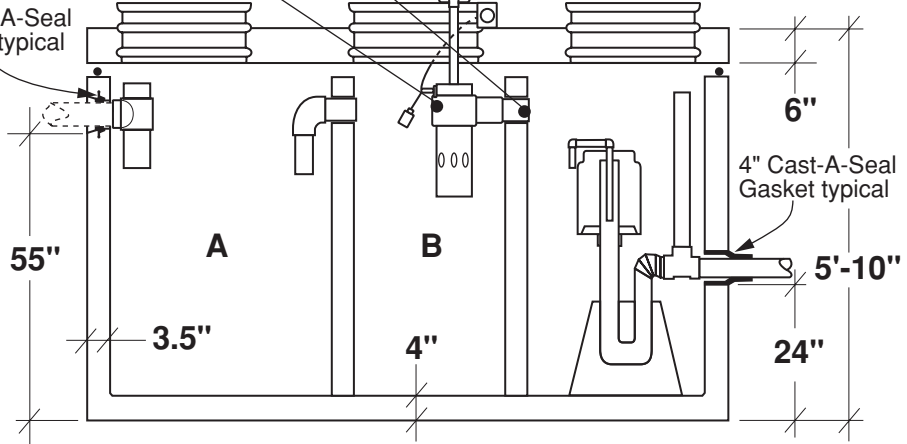


SECTION

4" Cast-A-Seal  
Gasket typical

Concrete or heavy  
duty polyethylene  
riser system

- Monolithic tank meets ASTM-C-1227 Spec. for water and wastewater structures.
- Butyl rubber sealant meets Fed. Spec. SS-S-210A. (Provided with tank)
- All plumbing shown in diagram is 4" SDR 35. (Provided with tank)



\* Includes (2) 200 lbs. siphon / foundations

Part #	Capacities (gallons)		Siphon Chamber (gallons)	Siphon / Discharge		Approximate Weights			
	A	B		Tank*	Lid	Baffle Walls	Total		
PCA-000-339	640	420	330	#413	85 Gal.	8,830 lbs	3,370 lbs	1,820 lbs	14,020 lbs
PCA-001-339				#417	110 Gal.				

Note: N.T.S.

**FLXX®**   
**Watertight**  
**Front Range Precast Concrete, Inc.**  
 5901 Dexter Street, Unit 200, Commerce City, CO 80022  
 Phone (303) 442-3207 • (800) 783-3207 • Fax (303) 442-3209  
[www.flxx.com](http://www.flxx.com)