

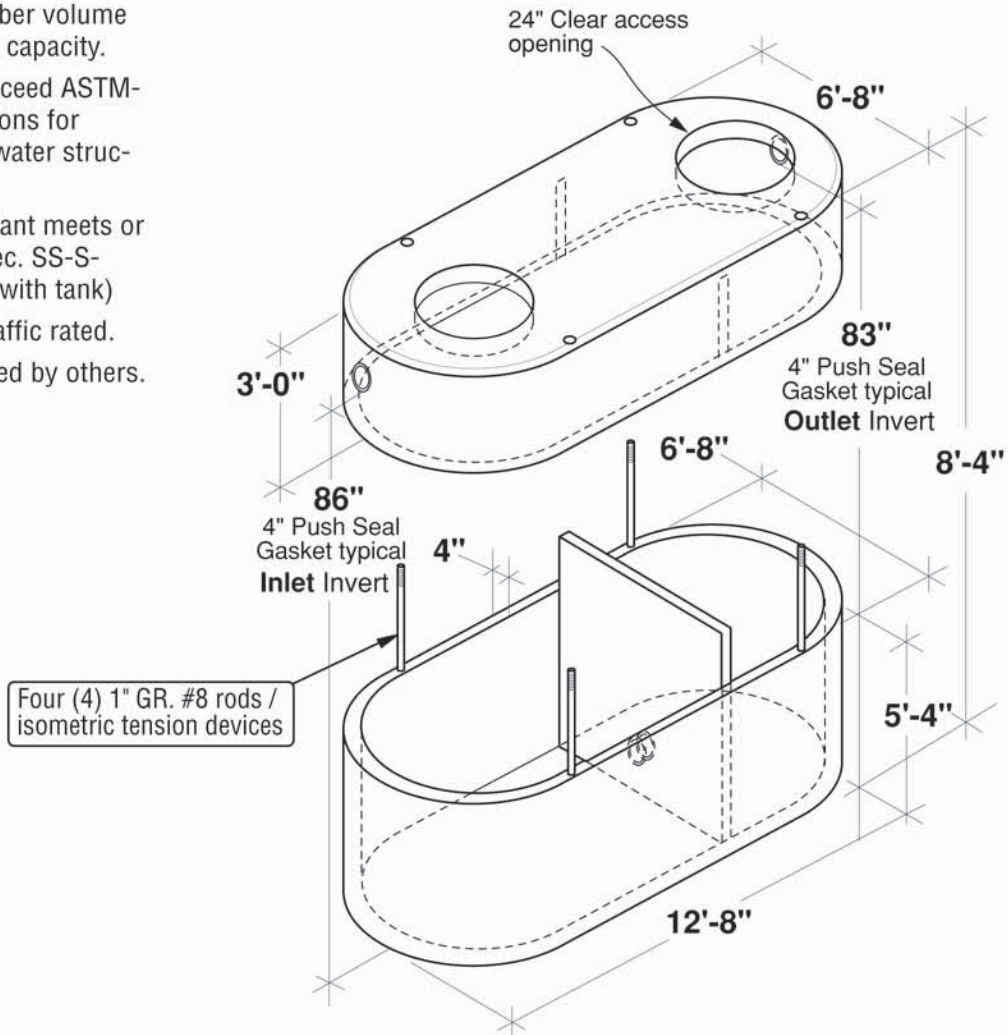
3250 Gal. Grease Interceptor

FLXX®

FLXX®

Total Capacity: 3365 gallons

- Secondary chamber volume equal to 1/3 total capacity.
- Tanks meet or exceed ASTM-C-913 specifications for water and wastewater structures.
- Butyl rubber sealant meets or exceeds Fed. Spec. SS-S-210A. (Provided with tank)
- ASSHTO H-20 traffic rated.
- Plumbing provided by others.



| Part # | Capacities | | | | Approximate Weights | | | |
|-------------|--------------|----------|-----------|----------|---------------------|-----------|-------------|------------|
| | Section/Gal. | | Cubic Ft. | | Tank | Lid | Baffle Wall | Total |
| PCA-000-319 | A | B | A | B | 11,690 lbs | 7,715 lbs | 1,590 lbs | 20,995 lbs |
| | 1940 | 1300 | 253 | 170 | | | | |

Note: N.T.S.

FLXX® 
Watertight
Front Range Precast Concrete, Inc.
 5439 N. Foothills Highway, Boulder, Colorado 80302
 Phone (303) 442-3207 • (800) 783-3207 • Fax (303) 442-3209
www.flxx.com