

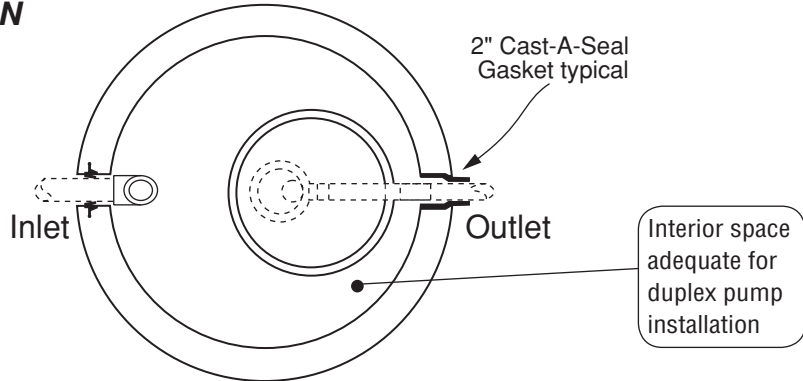
# 500 Gal. Electric Lift Station

**FLXX**

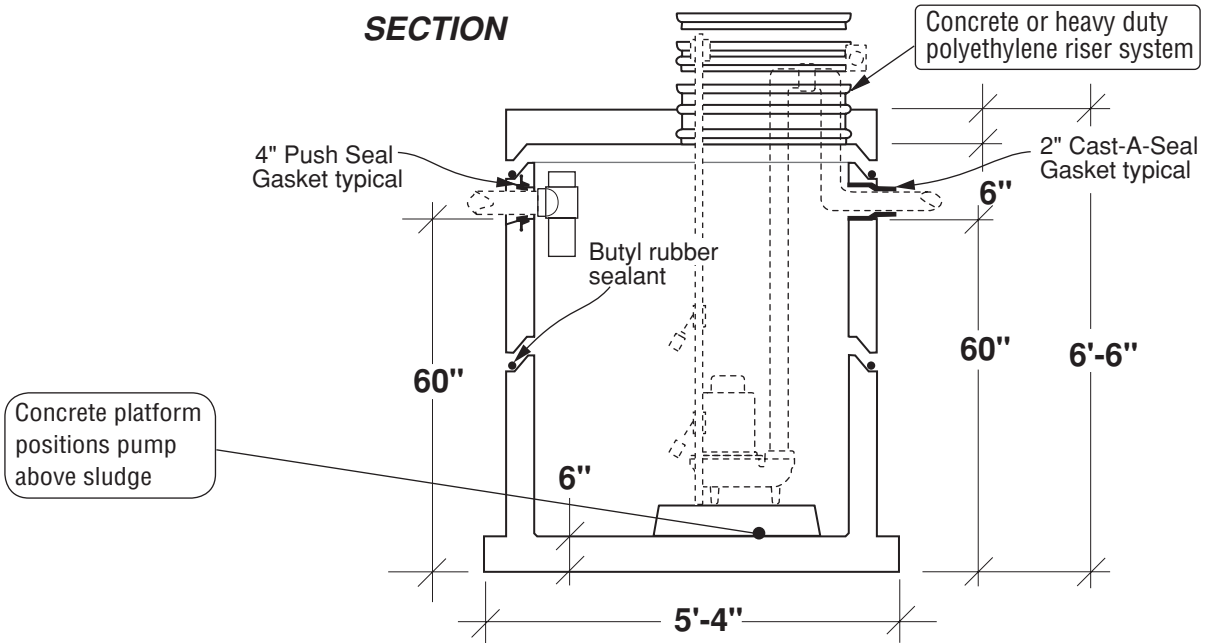
**FLXX**

- Monolithic tank meets ASTM-C-1227 Spec. for water and wastewater structures.
- Butyl rubber sealant meets Fed. Spec. SS-S-210A. (Provided with tank)
- All plumbing shown in diagram is 4" SDR 35. (Provided with tank)

**PLAN**



**SECTION**



Part #	Discharge / Cycle	Approximate Weights			
		Tank Base	Tank Section	Lid	Total
PCA-000-295	7.8 Gal / Vertical Inch	4,340 lbs	1,740 lbs	1,520 lbs	7,600 lbs

Note: N.T.S.

**FLXX**   
**Watertight**  
**Front Range Precast Concrete, Inc.**  
 5439 N. Foothills Highway, Boulder, Colorado 80302  
 Phone (303) 442-3207 • (800) 783-3207 • Fax (303) 442-3209  
[www.flxx.com](http://www.flxx.com)