

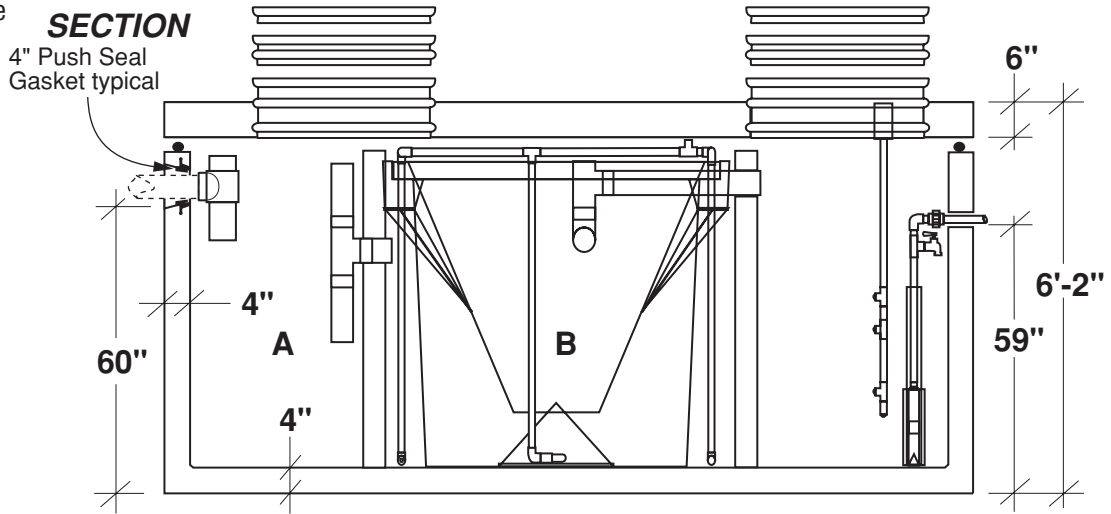
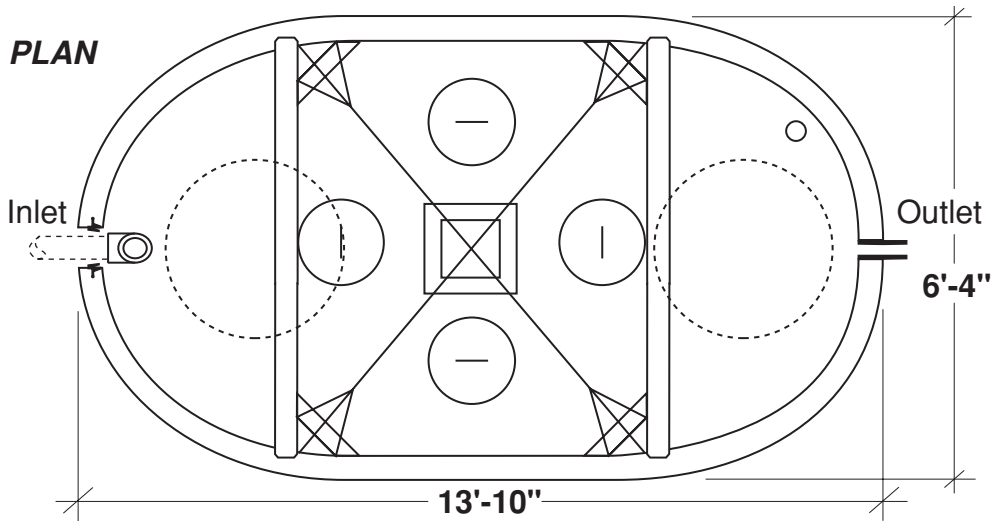
Colorado HOOT® 3 Bedroom Pumped

FLXX®

FLXX®

Total Capacity: 2300 gallons

- Monolithic tank meets ASTM-C-1227 Spec. for water and wastewater structures.
- Butyl rubber sealant meets Fed. Spec. SS-S-210A.
- See pages 35 - 41 for pumps and controls.
- Sensor tree
- Blower / Aerator
- Blaster pump
- Optional remote monitoring system
- 2+ Years service
- 3 year parts warranty



| Part Number | Capacities (gallons) | | Lift Station Chamber (gallons) | Discharge Per Cycle (gpm) | Approximate Weights | | | |
|-------------|----------------------|------|--------------------------------|---------------------------|---------------------|-----------|--------------|------------|
| | A | B | | | Tank | Lid | Baffle Walls | Total |
| HCA-0C0-200 | 450 | 1120 | 730 | 12-20 | 11,890 lbs | 5,165 lbs | 2,880 lbs | 19,935 lbs |

Note: N.T.S.

FLXX® 
Watertight
Front Range Precast Concrete, Inc.
 5439 N. Foothills Highway, Boulder, Colorado 80302
 Phone (303) 442-3207 • (800) 783-3207 • Fax (303) 442-3209
www.flxx.com