

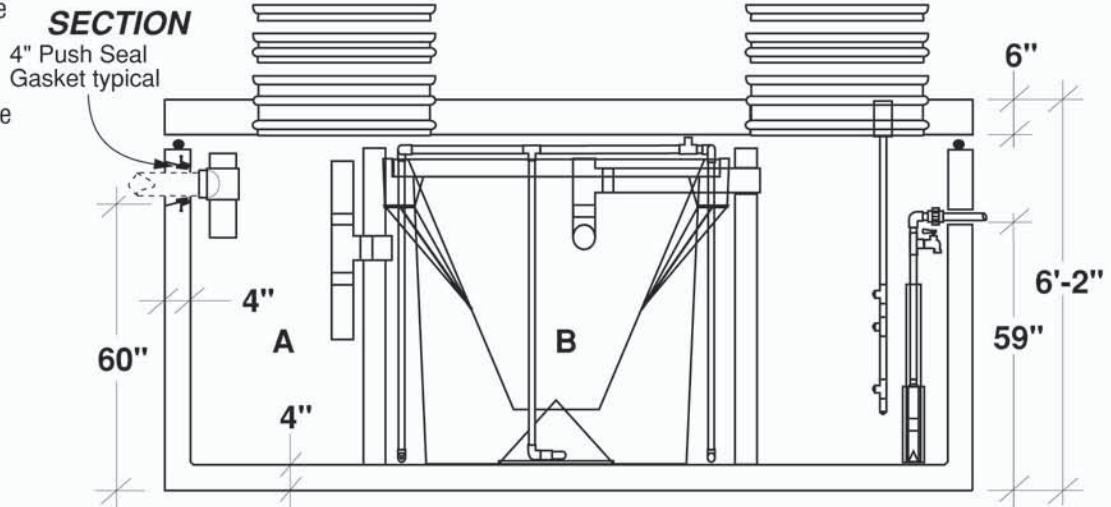
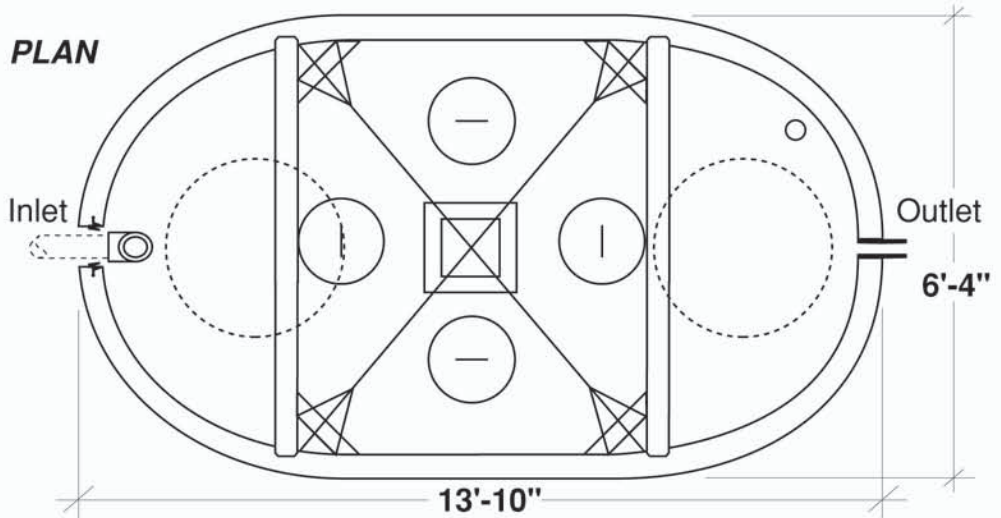
# Colorado HOOT® 4 Bedroom Pumped

FLXX®

FLXX®

## Model H-600P

- Monolithic tank meets ASTM-C-1227 Spec. for water and wastewater structures.
- Butyl rubber sealant meets Fed. Spec. SS-S-210A.
- See pages 35 - 41 for pumps and controls.
- Sensor tree
- Blower / Aerator
- Blaster pump
- Optional remote monitoring system
- 2+ Years service
- 3 year parts warranty



Part Number	Capacities (gallons)			Discharge Per Cycle (gpm)	Approximate Weights			
	A	B	Lift Station Chamber		Tank	Lid	Baffle Walls	Total
HCA-000-201	575	1120	605	12-20	11,890 lbs	5,165 lbs	2,880 lbs	19,935 lbs

Note: N.T.S.

**FLXX®**   
**Watertight**  
**Front Range Precast Concrete, Inc.**  
 5439 N. Foothills Highway, Boulder, Colorado 80302  
 Phone (303) 442-3207 • (800) 783-3207 • Fax (303) 442-3209  
[www.flxx.com](http://www.flxx.com)