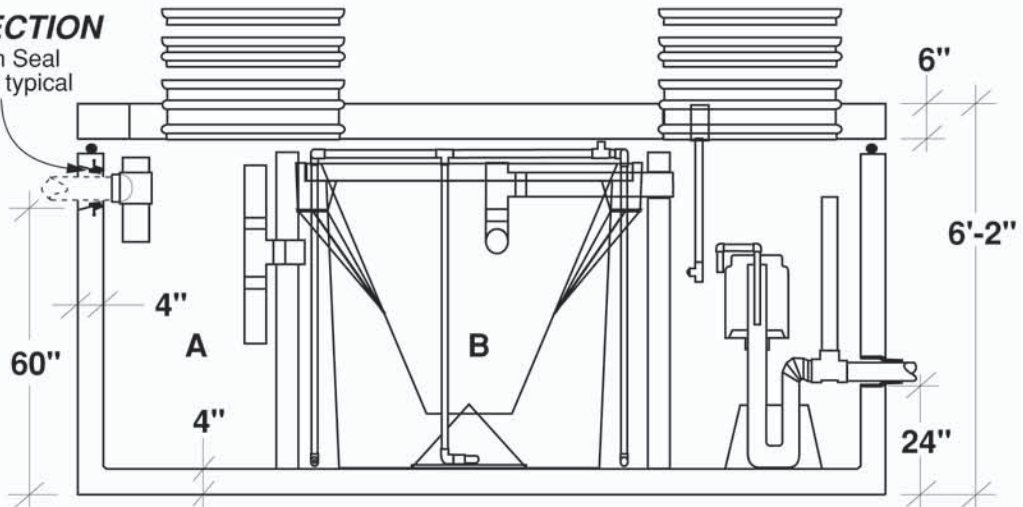
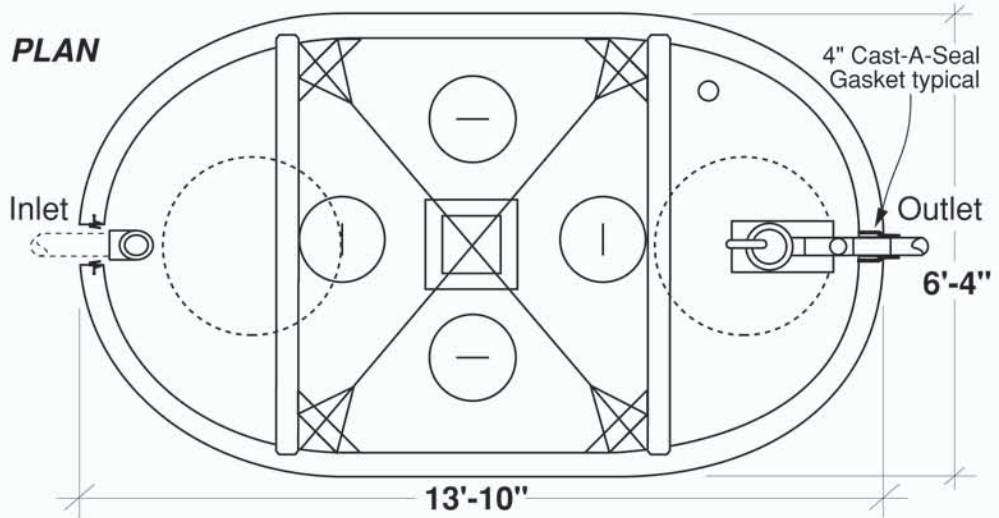


Colorado HOOT® 3 Bedroom Siphon Model H-500S

FLXX®

FLXX®

- Monolithic tank meets ASTM-C-1227 Spec. for water and wastewater structures.
- Butyl rubber sealant meets Fed. Spec. SS-S-210A.
- See pages 35 - 41 for pumps and controls.
- Sensor tree
- Blower / Aerator
- #417 Siphon
- Optional remote monitoring system
- 2+ Years service
- 3 year parts warranty



* Includes 200 lbs. siphon / foundation

Part Number	Capacities (gallons)			Discharge Per Cycle (gallons)	Approximate Weights			
	A	B	Dosing Chamber		Tank*	Lid	Baffle Walls	Total
HCA-000-100	450	1120	730	220	12,090 lbs	5,165 lbs	2,880 lbs	20,135 lbs

Note: N.T.S.

FLXX® 
Watertight
Front Range Precast Concrete, Inc.
 5439 N. Foothills Highway, Boulder, Colorado 80302
 Phone (303) 442-3207 • (800) 783-3207 • Fax (303) 442-3209
www.flxx.com