

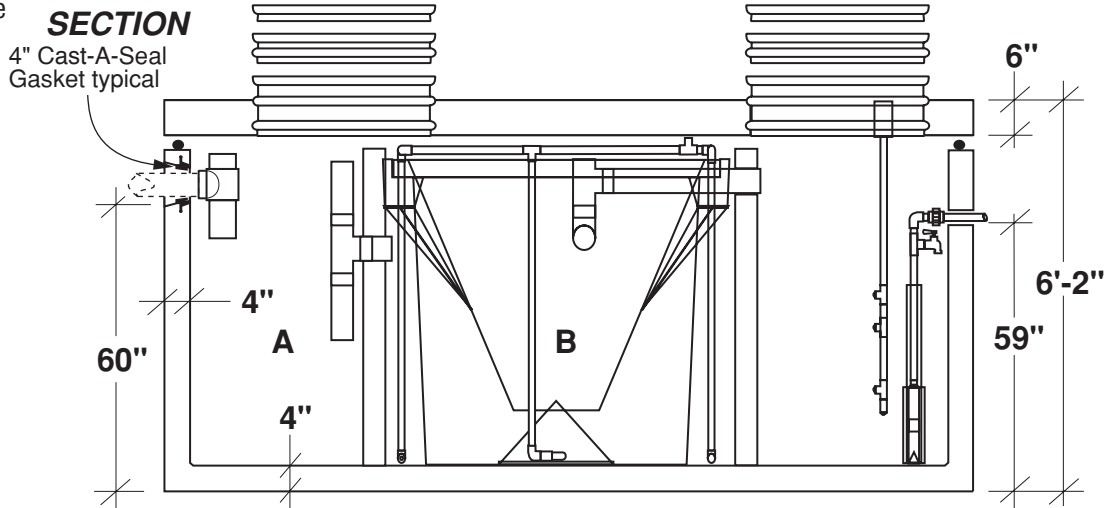
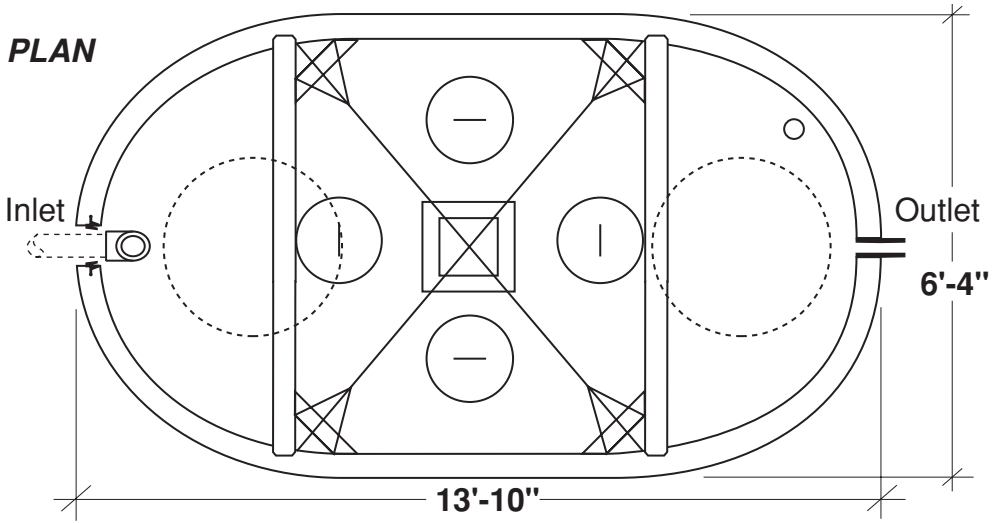
Colorado HOOT® 3 Bedroom Pumped

FLXX®

FLXX®

Total Capacity: 2300 gallons

- Monolithic tank meets ASTM-C-1227 Spec. for water and wastewater structures.
- Butyl rubber sealant meets Fed. Spec. SS-S-210A.
- See pages 35 - 41 for pumps and controls.
- Sensor tree
- Blower / Aerator
- Blaster pump
- Optional remote monitoring system
- 2+ Years service
- 3 year parts warranty



Part Number	Capacities (gallons)		Lift Station Chamber (gallons)	Discharge Per Cycle (gpm)	Approximate Weights			
	A	B			Tank	Lid	Baffle Walls	Total
HCA-0C0-200	450	1120	730	12-20	11,890 lbs	5,165 lbs	2,880 lbs	19,935 lbs

Note: N.T.S.

FLXX® 
Watertight
Front Range Precast Concrete, Inc.
 5901 Dexter Street, Unit 200, Commerce City, CO 80022
 Phone (303) 442-3207 • (800) 783-3207 • Fax (303) 442-3209
www.flxx.com