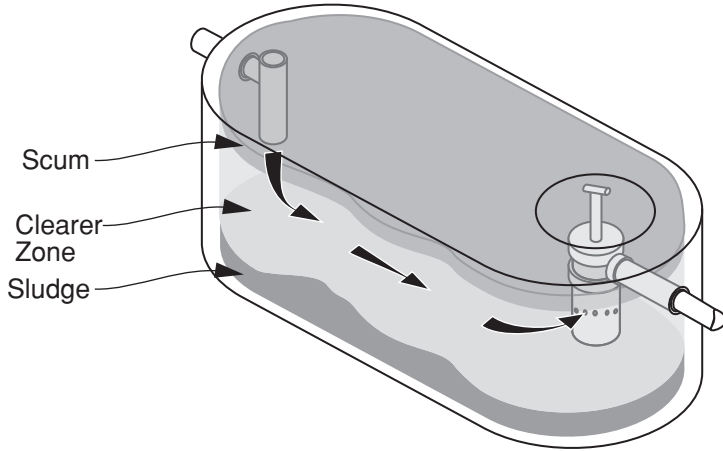


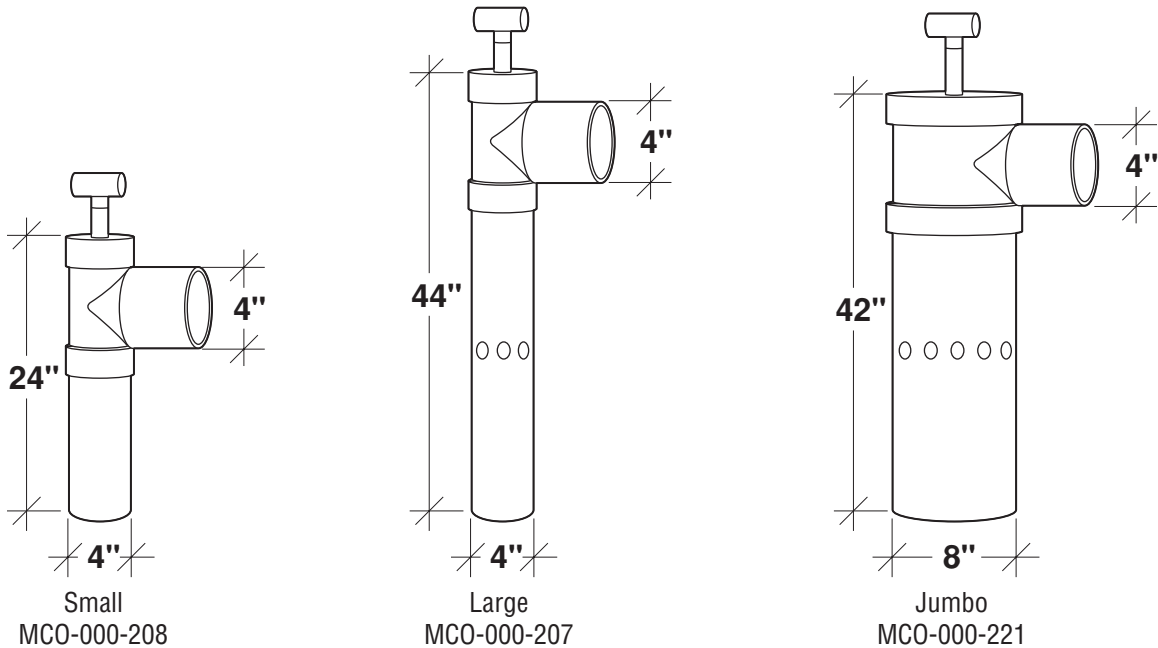
Operation of Effluent Filters



Effluent filters retain particle solids in the tank, protecting drain fields from clog-up and extending absorption field life.

Effluent filters work by using gravity to force effluent through a screened filtering surface. Larger particles are detained and shed to the bottom of the tank. Biological colonies form on the filtering surface, trapping and decomposing even smaller particles. Total suspended solids at the effluent outlet are greatly reduced.

Free-flowing effluent filters need little maintenance; permanent washable filter cartridges are constructed of PVC and Polyethylene, inert to deterioration in waste water.



Note: N.T.S.

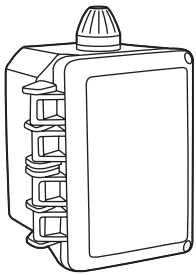
FLXX®
Watertight
Front Range Precast Concrete, Inc.
5439 N. Foothills Highway, Boulder, Colorado 80302
Phone (303) 442-3207 • (800) 783-3207 • Fax (303) 442-3209
www.flxx.com

The "Full Monty"

FLXX®

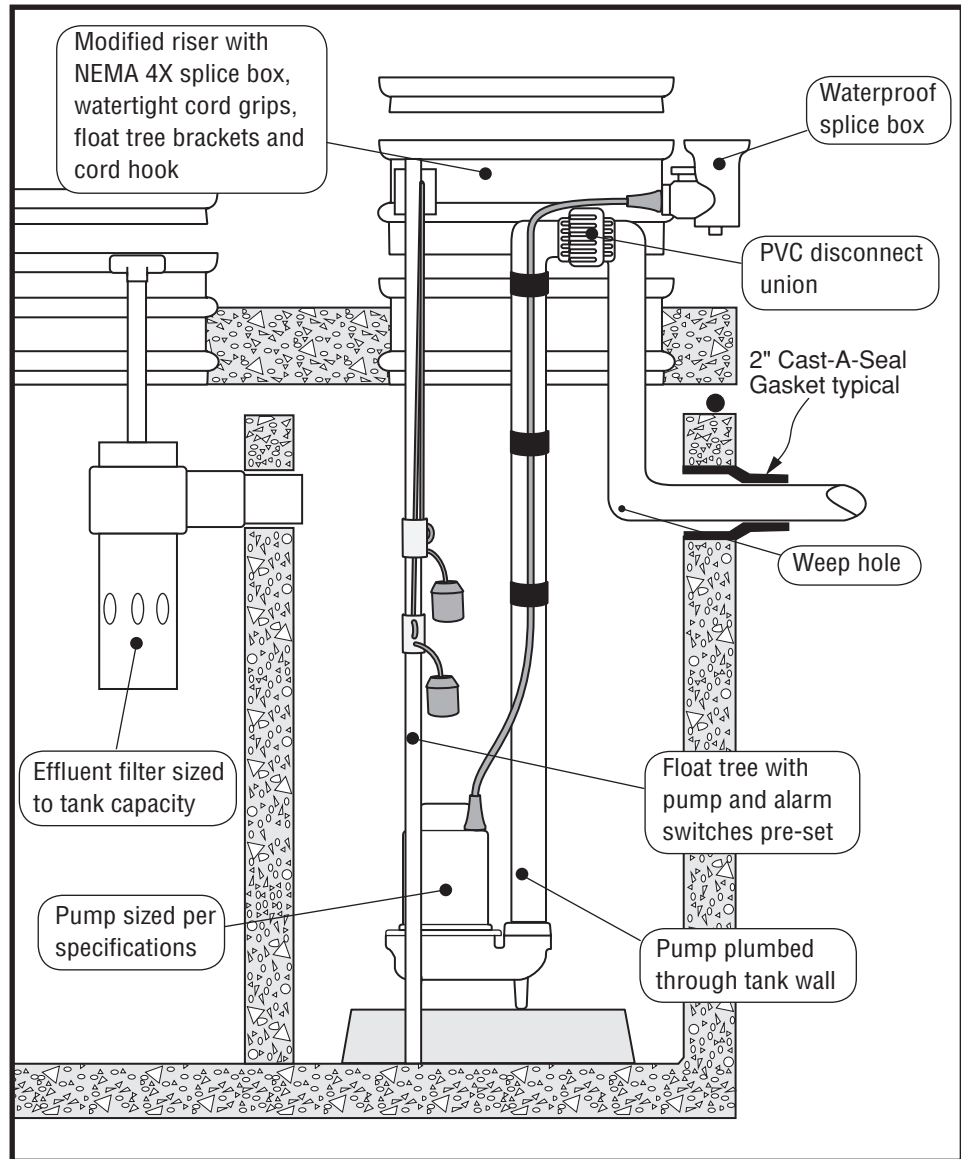
FLXX®

Electric Lift Chambers and Septic Tanks Fully Equipped and Ready for Final Installation



Alarm System Features

- 2 HOA pump switches
- Magnetic motor contacts
- Red alarm beacon
- Alarm horn



Note: N.T.S.

FLXX® 
Watertight

Front Range Precast Concrete, Inc.

5439 N. Foothills Highway, Boulder, Colorado 80302

Phone (303) 442-3207 • (800) 783-3207 • Fax (303) 442-3209

www.flxx.com

1250 Gal. Three Compartment Single Auto Siphon Septic Tank

FLXX®

FLXX®

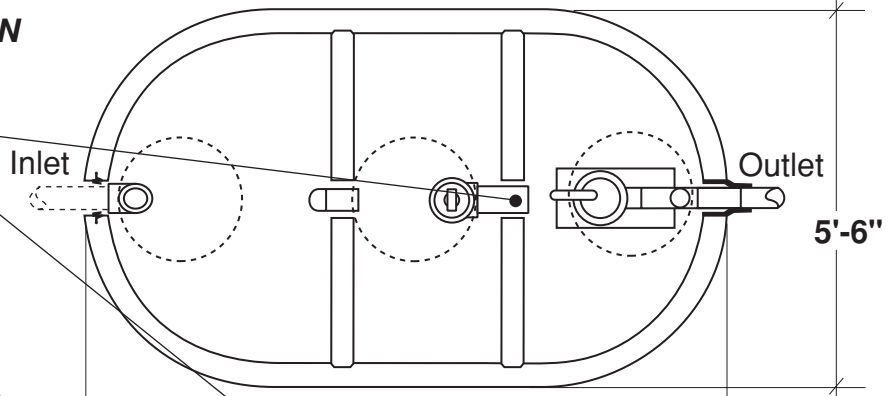
Total Capacity: 1390 gallons

PLAN

Sealed baffle wall.
Install effluent filter
at this location.

Filter monitor: Optional
liquid level alarm box,
float control switch
with bracket and J-box.
Connections to electrical
source by others.

Concrete or heavy
duty polyethylene
riser system

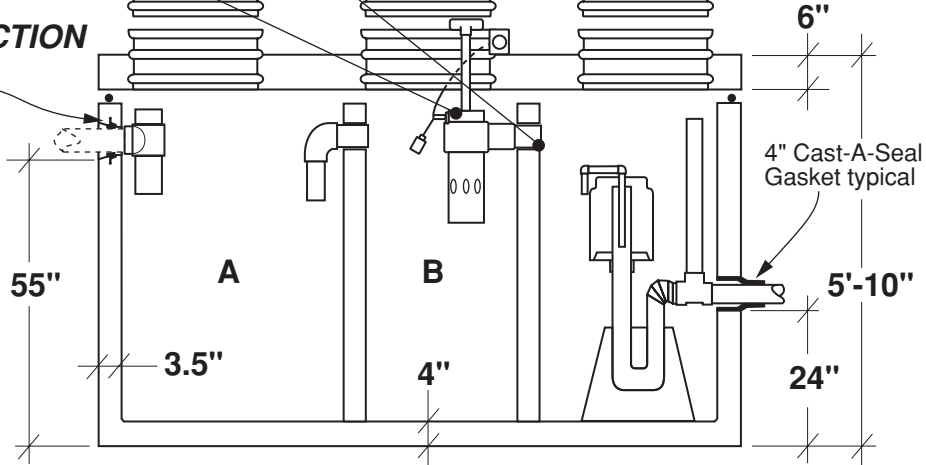


SECTION

4" Push Seal
Gasket typical

4" Cast-A-Seal
Gasket typical

- Monolithic tank meets ASTM-C-1227 Spec. for water and wastewater structures.
- Butyl rubber sealant meets Fed. Spec. SS-S-210A. (Provided with tank)
- All plumbing shown in diagram is 4" SDR 35. (Provided with tank)



* Includes 200 lbs. siphon / foundation

Part #	Capacities (gallons)		Siphon Chamber (gallons)	Siphon / Discharge		Approximate Weights			
	A	B		Tank*	Lid	Baffle Walls	Total		
PCA-000-262	640	420	330	#413	85 Gal.	8,630 lbs	3,370 lbs	1,820 lbs	13,820 lbs
PCA-001-262				#417	110 Gal.				
PCA-002-262				#423	150 Gal.				

Note: N.T.S.

FLXX® 
Watertight
Front Range Precast Concrete, Inc.
 5439 N. Foothills Highway, Boulder, Colorado 80302
 Phone (303) 442-3207 • (800) 783-3207 • Fax (303) 442-3209
www.flxx.com

1500 Gal. Three Compartment Single Auto Siphon Septic Tank

FLXX®

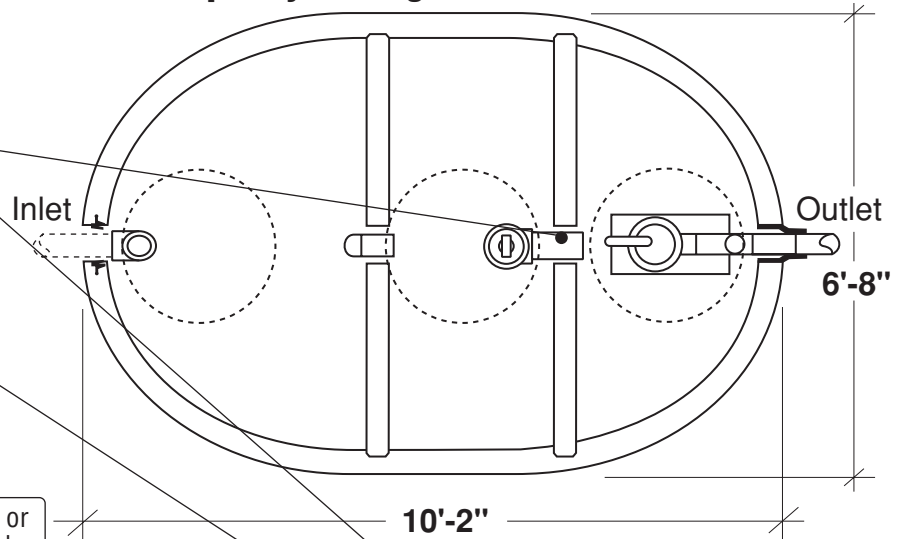
FLXX®

Total Capacity: 1535 gallons

PLAN

Sealed baffle wall.
Install effluent filter
at this location.

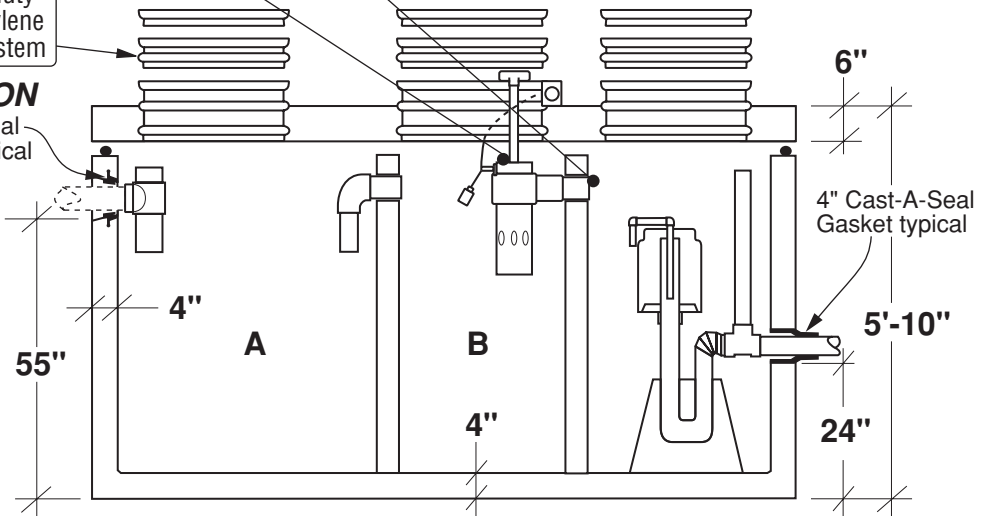
Filter monitor: Optional
liquid level alarm box,
float control switch with
bracket and J-box.
Connections to electrical
source by others.



Concrete or
heavy duty
polyethylene
riser system

SECTION

4" Push Seal
Gasket typical



- Monolithic tank meets ASTM-C-1227 Spec. for water and wastewater structures.
- Butyl rubber sealant meets Fed. Spec. SS-S-210A. (Provided with tank)
- All plumbing shown in diagram is 4" SDR 35. (Provided with tank)

Part #	Capacities (gallons)		Siphon Chamber (gallons)	Siphon / Discharge		Approximate Weights			
	A	B		Tank*	Lid	Baffle Walls	Total		
PCA-000-263	675	450	410	#413	115 Gal.	9,815 lbs	3,900 lbs	2,220 lbs	15,935 lbs
PCA-001-263				#417	150 Gal.				
PCA-002-263				#423	200 Gal.				

Note: N.T.S.

* Includes 200 lbs. siphon / foundation

FLXX® 
Watertight

Front Range Precast Concrete, Inc.

5439 N. Foothills Highway, Boulder, Colorado 80302

Phone (303) 442-3207 • (800) 783-3207 • Fax (303) 442-3209

www.flxx.com

2000 Gal. Three Compartment Single Auto Siphon Septic Tank

FLXX®

FLXX®

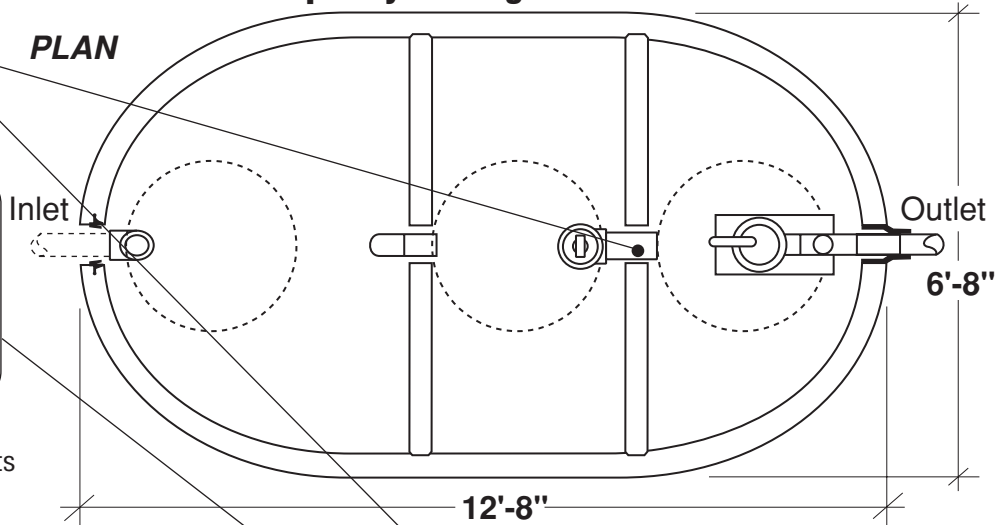
Total Capacity: 2000 gallons

Sealed baffle wall. Install effluent filter at this location.

Filter monitor: Optional liquid level alarm box, float control switch with bracket and J-box. Connections to electrical source by others.

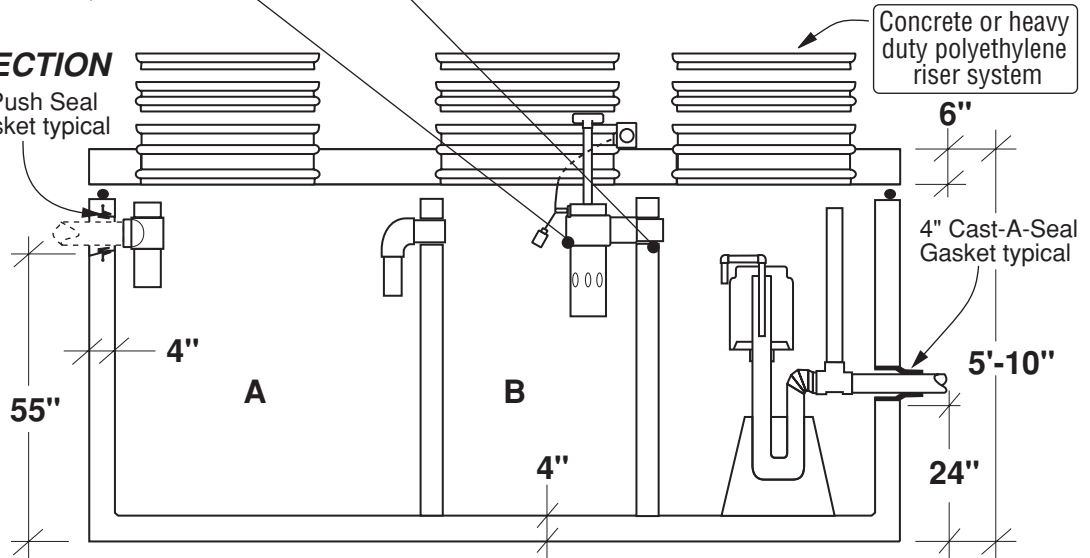
- Monolithic tank meets ASTM-C-1227 Spec. for water and wastewater structures.
- Butyl rubber sealant meets Fed. Spec. SS-S-210A. (Provided with tank)
- All plumbing shown in diagram is 4" SDR 35. (Provided with tank)

PLAN



SECTION

4" Push Seal Gasket typical



Part #	Capacities (gallons)		Siphon Chamber (gallons)	Siphon / Discharge		Approximate Weights			
	A	B		Tank*	Lid	Baffle Walls	Total		
PCA-000-265	1,000	500	500	#413	130 Gal.	11,890 lbs	5,145 lbs	2,220 lbs	19,255 lbs
PCA-001-265				#417	170 Gal.				
PCA-002-265				#423	230 Gal.				

Note: N.T.S.

* Includes 200 lbs. siphon / foundation

FLXX® 
Watertight
Front Range Precast Concrete, Inc.
 5439 N. Foothills Highway, Boulder, Colorado 80302
 Phone (303) 442-3207 • (800) 783-3207 • Fax (303) 442-3209
www.flxx.com

2500 Gal. Three Compartment Single Auto Siphon Septic Tank

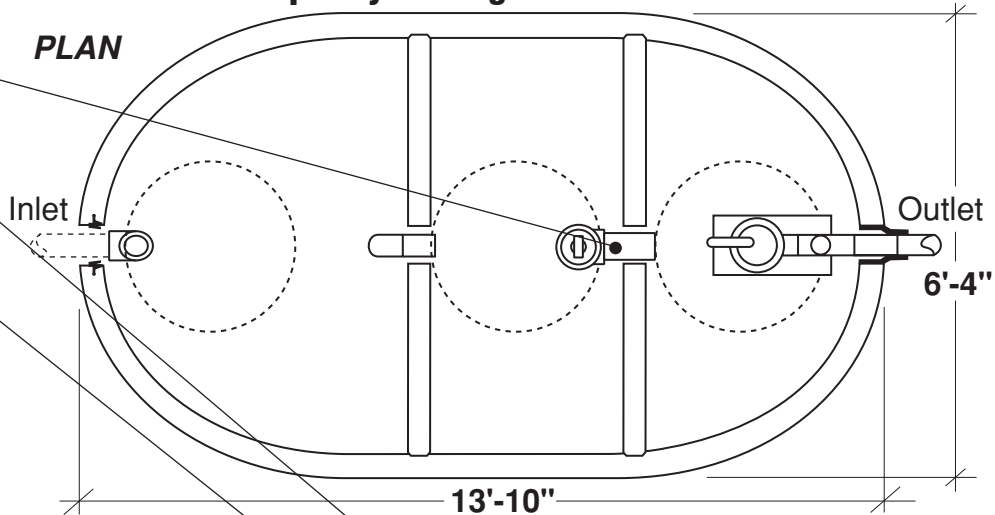
FLXX®

FLXX®

Total Capacity: 2450 gallons

Sealed baffle wall. Install effluent filter at this location.

PLAN

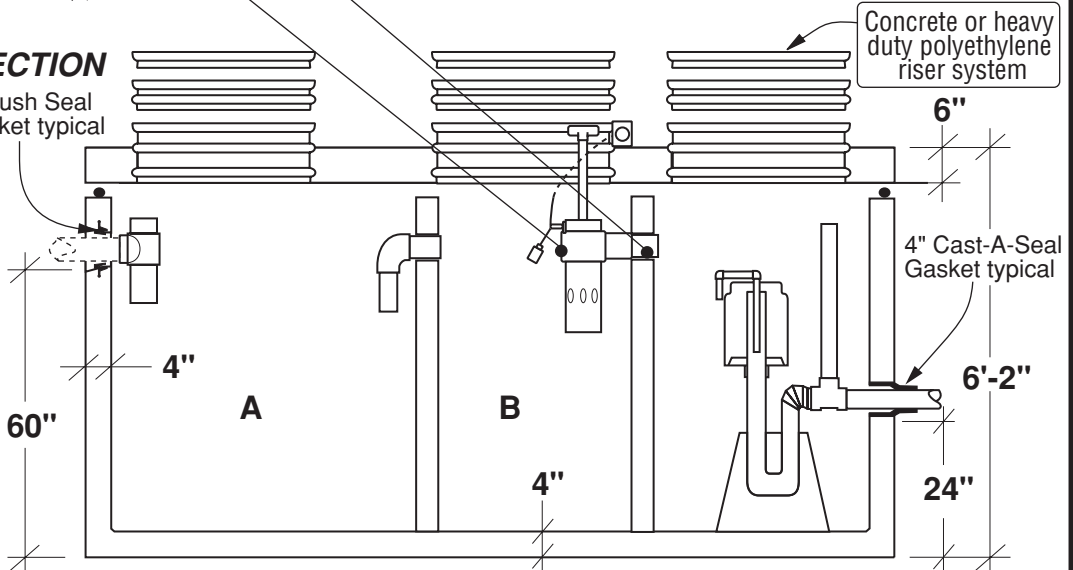


Filter monitor: Optional liquid level alarm box, float control switch with bracket and J-box. Connections to electrical source by others.

- Monolithic tank meets ASTM-C-1227 Spec. for water and wastewater structures.
- Butyl rubber sealant meets Fed. Spec. SS-S-210A. (Provided with tank)
- All plumbing shown in diagram is 4" SDR 35. (Provided with tank)

SECTION

4" Push Seal Gasket typical



Concrete or heavy duty polyethylene riser system

6"

4" Cast-A-Seal Gasket typical

6'-2"

24"

Part #	Capacities (gallons)		Siphon Chamber (gallons)	Siphon / Discharge		Approximate Weights			
	A	B		Tank*	Lid	Baffle Walls	Total		
PCA-000-353	1,145	780	525	#413	135 Gal.	11,890 lbs	5,160 lbs	2,300 lbs	19,350 lbs
PCA-001-353				#417	180 Gal.				
PCA-002-353				#423	240 Gal.				

Note: N.T.S.

* Includes 200 lbs. siphon / foundation

FLXX® 
Watertight
Front Range Precast Concrete, Inc.
 5439 N. Foothills Highway, Boulder, Colorado 80302
 Phone (303) 442-3207 • (800) 783-3207 • Fax (303) 442-3209
www.flxx.com

3250 Gal. Three Compartment Single Auto Siphon Septic Tank

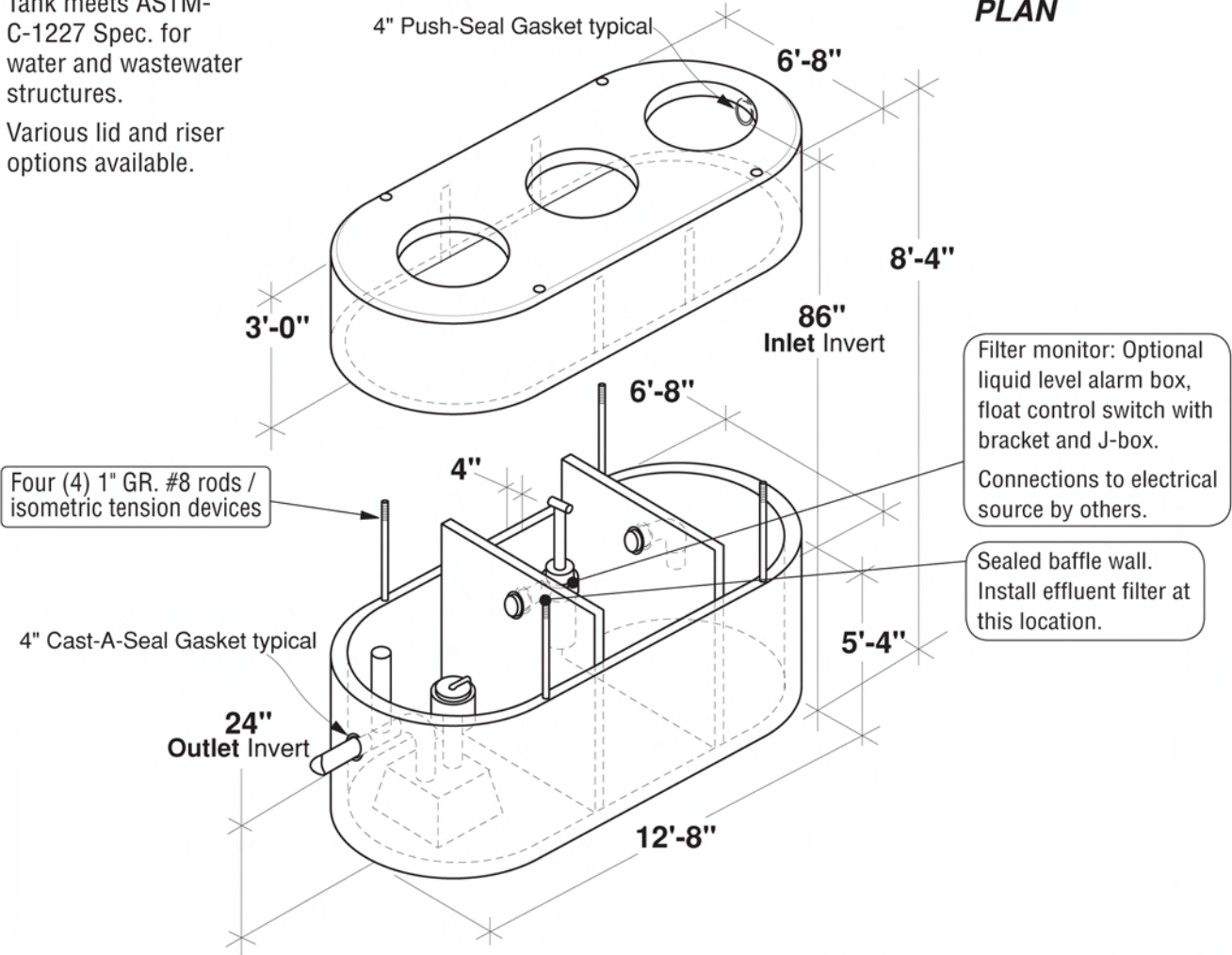
FLXX®

FLXX®

Total Capacity: 3365 gallons

- Tank meets ASTM-C-1227 Spec. for water and wastewater structures.
- Various lid and riser options available.

PLAN



* Includes 200 lbs. siphon / foundation

Part #	Capacities (gallons)		Siphon Chamber (gallons)	Siphon / Discharge		Approximate Weights			
	A	B				Tank*	Lid	Baffle Walls	Total
PCA-001-293	1,685	815	865	#417	240 Gal.	11,890 lbs	7,715 lbs	3,180 lbs	22,785 lbs
PCA-002-293				#423	305 Gal.				

Note: N.T.S.

FLXX® 
Watertight
Front Range Precast Concrete, Inc.
 5439 N. Foothills Highway, Boulder, Colorado 80302
 Phone (303) 442-3207 • (800) 783-3207 • Fax (303) 442-3209
www.flxx.com