

# 1250 Gal. Three Compartment Electric Lift Septic Tank

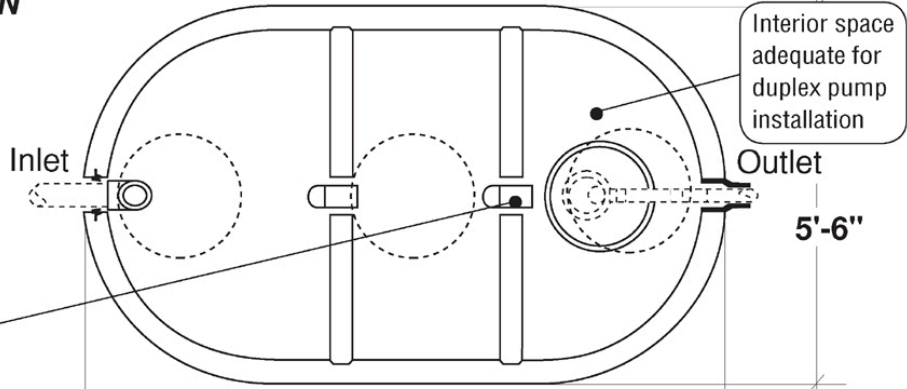
**FLXX**

**FLXX**

**Total Capacity: 1390 gallons**

- Monolithic tank meets ASTM-C-1227 Spec. for water and wastewater structures.
- Butyl rubber sealant meets Fed. Spec. SS-S-210A. (Provided with tank)
- See pages 35 - 41 for pumps and controls.

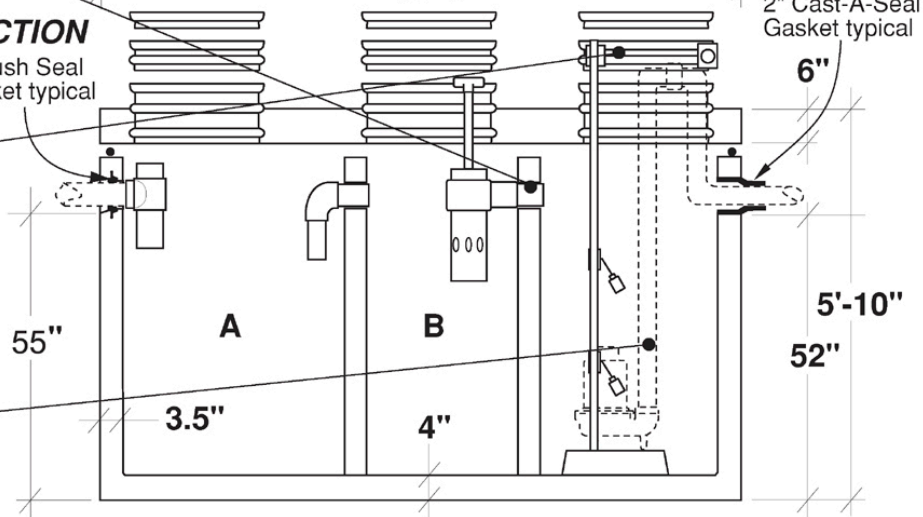
**PLAN**



Sealed baffle wall. Install effluent filter at this location.

**SECTION**

4" Push Seal Gasket typical



2' x 1' Modified riser w/ J-box float tree bracket

Effluent pump (sized per specification) / remote alarm box, float tree, control and alarm switches installed and pump plumbed to stub-out including pre-assembled pipes and fittings. Connections to electrical source by others.

Part #	Capacities (gallons)		Lift Station Chamber (gallons)	Discharge Per Cycle	Approximate Weights			
	A	B			Tank	Lid	Baffle Walls	Total
PCA-000-267	640	420	330	Variable 6.6 Gal. / Vertical Inch	8,430 lbs	3,370 lbs	1,820 lbs	13,620 lbs

Note: N.T.S.

**FLXX**   
**Watertight**  
**Front Range Precast Concrete, Inc.**  
 5439 N. Foothills Highway, Boulder, Colorado 80302  
 Phone (303) 442-3207 • (800) 783-3207 • Fax (303) 442-3209  
[www.flxx.com](http://www.flxx.com)

# 1500 Gal. Three Compartment Electric Lift Septic Tank

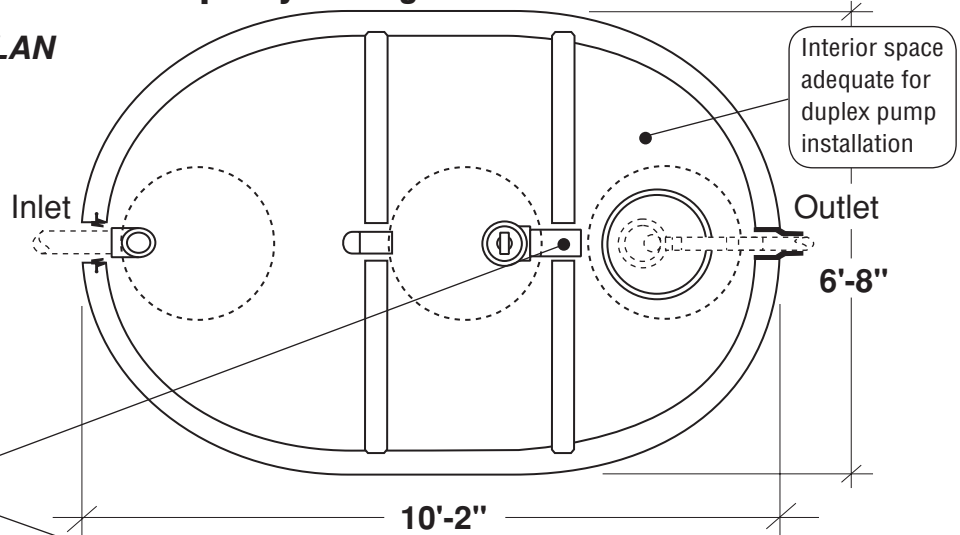
FLXX®

FLXX®

Total Capacity: 1535 gallons

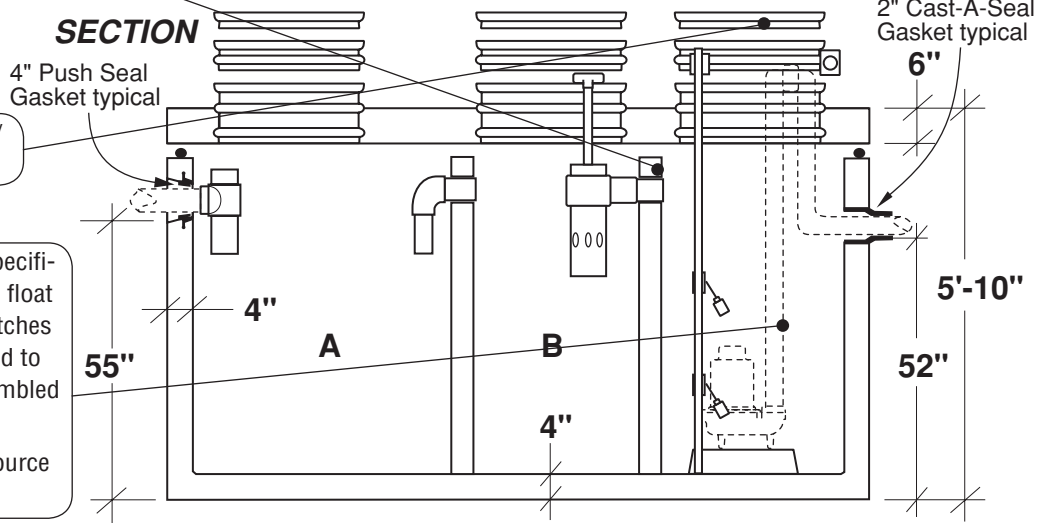
- Monolithic tank meets ASTM-C-1227 Spec. for water and wastewater structures.
- Butyl rubber sealant meets Fed. Spec. SS-S-210A. (Provided with tank)
- See pages 35 - 41 for pumps and controls.

PLAN



Sealed baffle wall. Install effluent filter at this location.

SECTION



2' x 1' Modified riser w/ J-box float tree bracket

Effluent pump (sized per specification) / remote alarm box, float tree, control and alarm switches installed and pump plumbed to stub-out including preassembled pipes and fittings. Connections to electrical source by others.

Part #	Capacities (gallons)		Lift Station Chamber (gallons)	Discharge Per Cycle	Approximate Weights			
	A	B			Tank	Lid	Baffle Walls	Total
PCA-000-268	675	450	410	Variable 8.8 Gal. / Vertical Inch	9,615 lbs	3,900 lbs	2,220 lbs	15,735 lbs

Note: N.T.S.

**FLXX®**   
**Watertight**  
**Front Range Precast Concrete, Inc.**  
 5439 N. Foothills Highway, Boulder, Colorado 80302  
 Phone (303) 442-3207 • (800) 783-3207 • Fax (303) 442-3209  
[www.flxx.com](http://www.flxx.com)

# 2000 Gal. Three Compartment Electric Lift Septic Tank

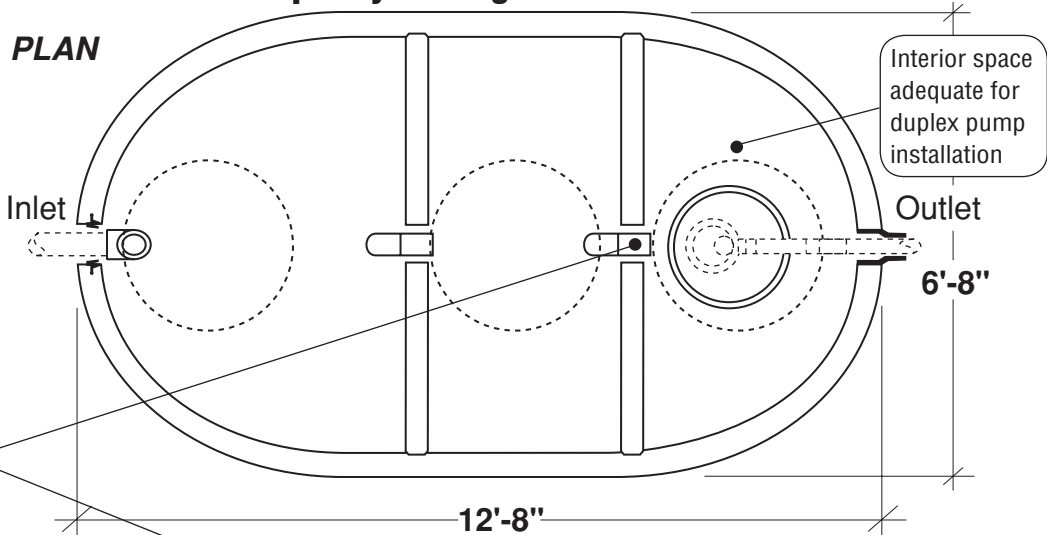
FLXX®

FLXX®

Total Capacity: 2000 gallons

- Monolithic tank meets ASTM-C-1227 Spec. for water and wastewater structures.
- Butyl rubber sealant meets Fed. Spec. SS-S-210A. (Provided with tank)
- See pages 35 - 41 for pumps and controls.

PLAN



Sealed baffle wall. Install effluent filter at this location.

2' x 1' Modified riser w/J-box float tree bracket

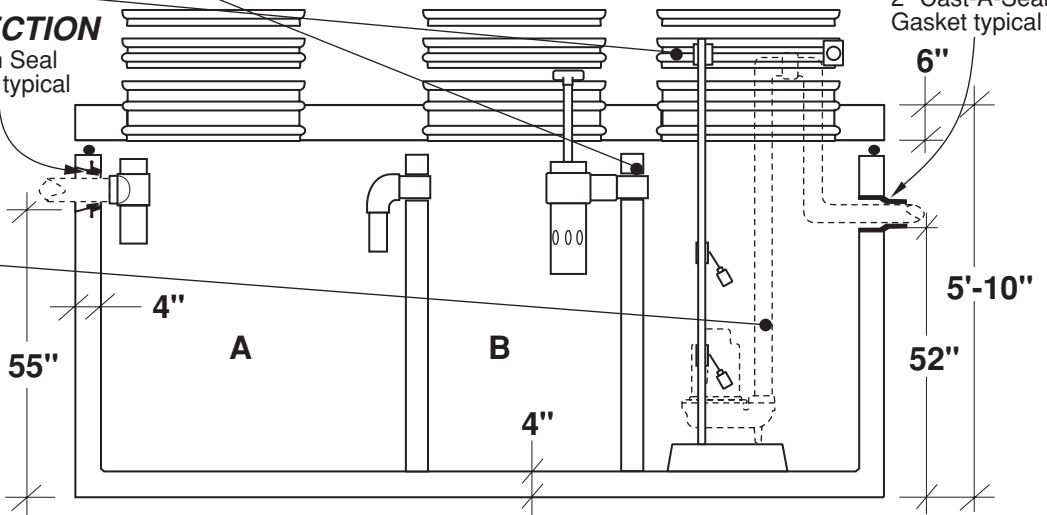
SECTION

4" Push Seal Gasket typical

2" Cast-A-Seal Gasket typical

Effluent pump (sized per specification) / remote alarm box, float tree, control and alarm switches installed and pump plumbed to stub-out including preassembled pipes and fittings.

Connections to electrical source by others.



Part #	Capacities (gallons)		Lift Station Chamber (gallons)	Discharge Per Cycle	Approximate Weights			
	A	B			Tank	Lid	Baffle Walls	Total
PCA-000-269	1,000	500	500	Variable 10.5 Gal. / Vertical Inch	11,690 lbs	5,145 lbs	2,220 lbs	19,055 lbs

Note: N.T.S.

**FLXX®**   
**Watertight**  
**Front Range Precast Concrete, Inc.**  
 5439 N. Foothills Highway, Boulder, Colorado 80302  
 Phone (303) 442-3207 • (800) 783-3207 • Fax (303) 442-3209  
[www.flxx.com](http://www.flxx.com)

# 2500 Gal. Three Compartment Electric Lift Septic Tank

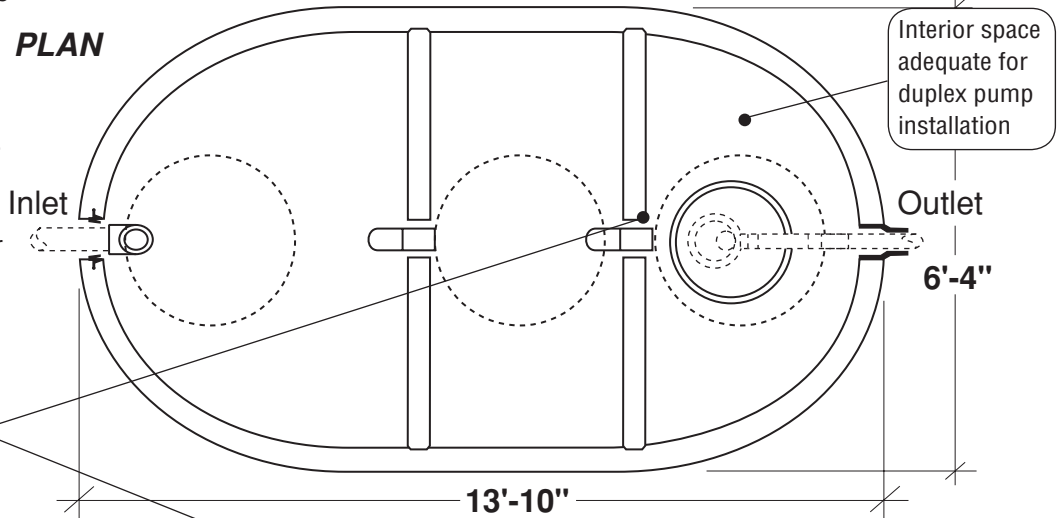
FLXX®

FLXX®

Total Capacity: 2450 gallons

- Monolithic tank meets ASTM-C-1227 Spec. for water and wastewater structures.
- Butyl rubber sealant meets Fed. Spec. SS-S-210A. (Provided with tank)
- See pages 35 - 41 for pumps and controls.

PLAN



Sealed baffle wall. Install effluent filter at this location.

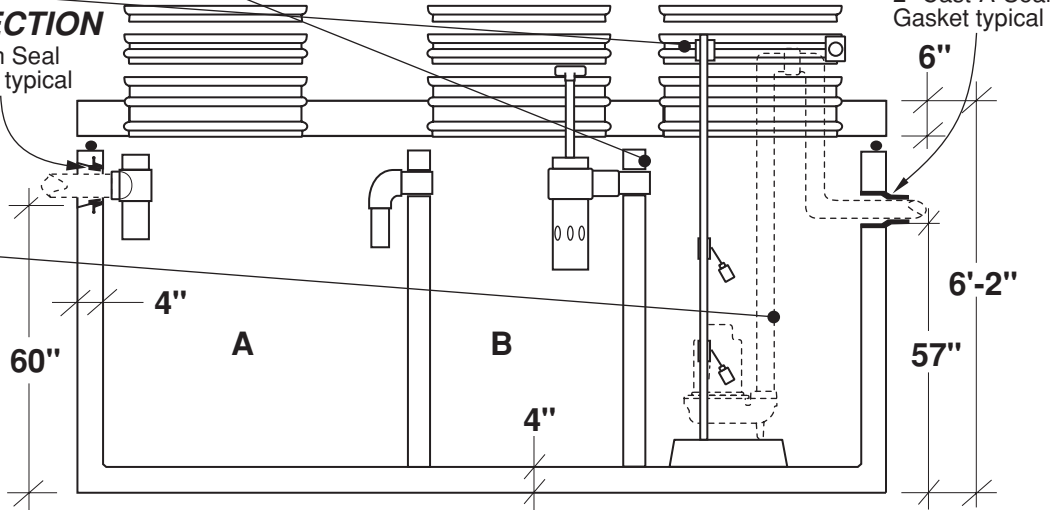
2' x 1' Modified riser w/ J-box float tree bracket

SECTION

4" Push Seal Gasket typical

2" Cast-A-Seal Gasket typical

Effluent pump (sized per specification) / remote alarm box, float tree, control and alarm switches installed and pump plumbed to stub-out including preassembled pipes and fittings. Connections to electrical source by others.



Part #	Capacities (gallons)		Lift Station Chamber (gallons)	Discharge Per Cycle	Approximate Weights			
	A	B			Tank	Lid	Baffle Walls	Total
PCA-000-355	1,145	780	525	Variable 11.2 Gal. / Vertical Inch	11,690 lbs	5,160 lbs	2,300 lbs	19,150 lbs

Note: N.T.S.

**FLXX®**   
**Watertight**  
**Front Range Precast Concrete, Inc.**  
 5439 N. Foothills Highway, Boulder, Colorado 80302  
 Phone (303) 442-3207 • (800) 783-3207 • Fax (303) 442-3209  
[www.flxx.com](http://www.flxx.com)

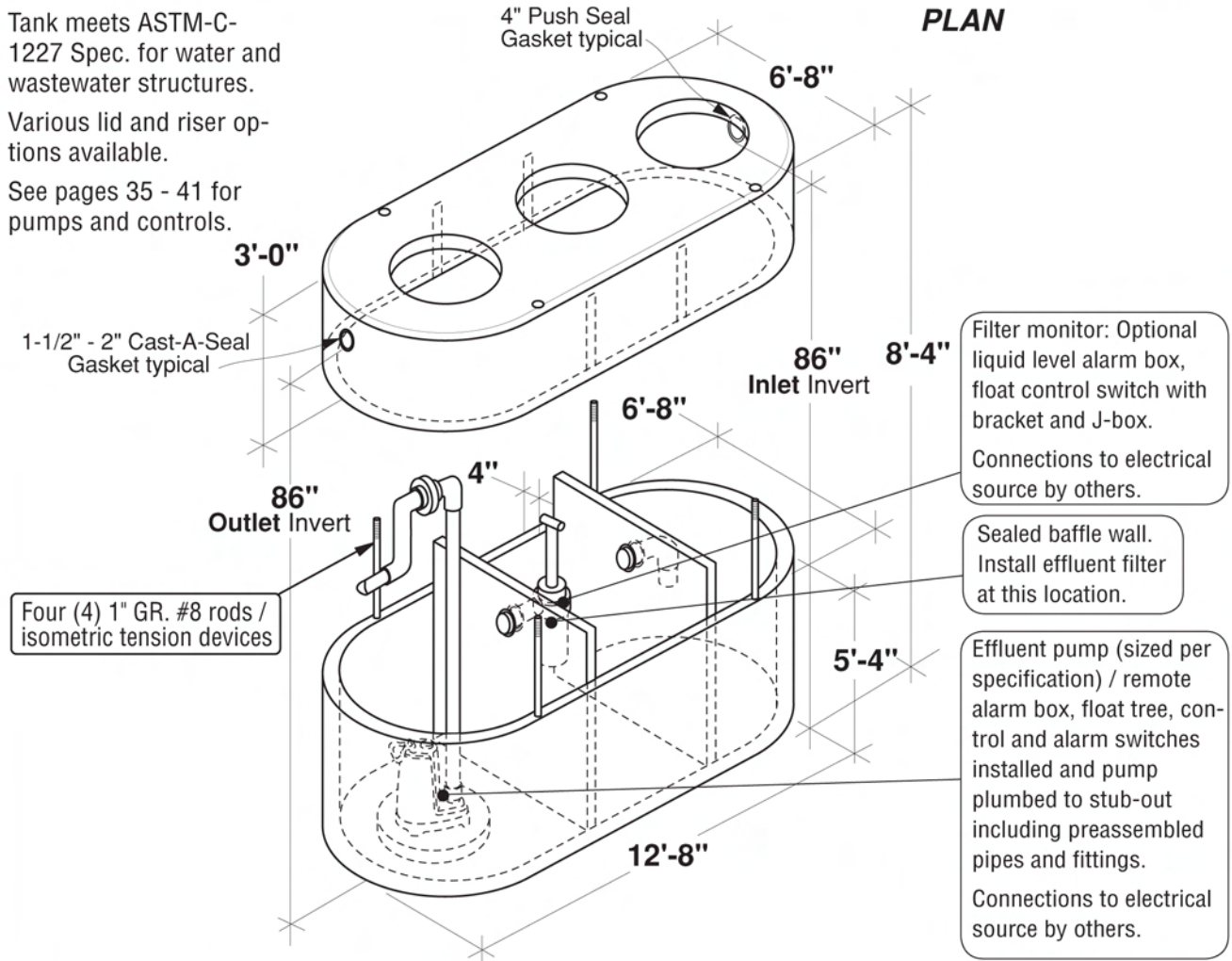
# 3250 Gal. Three Compartment Electric Lift Septic Tank

FLXX®

FLXX®

**Total Capacity: 3365 gallons**

- Tank meets ASTM-C-1227 Spec. for water and wastewater structures.
- Various lid and riser options available.
- See pages 35 - 41 for pumps and controls.



Part #	Capacities (gallons)		Lift Station Chamber (gallons)	Discharge Per Cycle	Approximate Weights			
	A	B			Tank	Lid	Baffle Walls	Total
PCA-000-342	1,685	815	865	Variable 10.5 Gal. / Vertical Inch	11,690 lbs	7,715 lbs	3,180 lbs	22,585 lbs

Note: N.T.S.

**FLXX®**   
**Watertight**  
**Front Range Precast Concrete, Inc.**  
 5439 N. Foothills Highway, Boulder, Colorado 80302  
 Phone (303) 442-3207 • (800) 783-3207 • Fax (303) 442-3209  
[www.flxx.com](http://www.flxx.com)